

[www.flaiclassic.it](http://www.flaiclassic.it)

FLAI

classic collection

FLAI

---

classic collection



once  
upon a  
time  
a new  
classic  
story.

**FLAI**

c l a s s i c

chapter . 01

## Ville Lumière

pag 04-05



chapter . 02

## Country Club

pag 66-67



chapter . 03

## Rosewood

pag 116-117



chapter . 04

## Maison des Fleures

pag 172-173



chapter . 01

# Ville Lumière

Des yeux qui font baisser les miens  
Un rire qui se perd sur sa bouche  
Voilà le portrait sans retouche  
De l'homme auquel j'appartiens

Quand il me prend dans ses bras  
Il me parle tout bas  
Je vois la vie en rose

Il me dit des mots d'amour  
Des mots de tous les jours  
Et ça me fait quelque chose

Il est entré dans mon coeur  
Une part de bonheur  
Dont je connais la cause

C'est lui pour moi, moi pour lui dans la vie  
Il me l'a dit, l'a juré pour la vie

Et dès que je l'aperçois  
Alors je sens en moi  
Mon coeur qui bat

....

*Édith Piaf, La Vie En Rose, 1947*











BASE MOBILE DA SOGGIORNO art. 8200  
Misure cm L. 150 P. 45 H. 80

ALZATA MOBILE DA SOGGIORNO art. 8201  
Misure cm L. 153 P. 48 H. 140

Base e Alzata in finitura Dolomite Lucido DLL, con ripiani e schienale in finitura Perla Lucido PRL.  
Accessori in metallo Argento antico e pomoli con Swarovski, cristalli neutri curvati.

*PIECE OF FURNITURE BASE FOR LIVING ROOM  
art.8200  
Dimensions cm. L. 150 D. 45 H. 80*

*UPPER-LIFT PART PIECE OF FURNITURE FOR LIVING  
ROOM art. 8201  
Dimensions cm. L. 153 D. 48 H. 140*

*Base and upper-lift part in gloss dolomite DLL with shelves and  
back in Gloss Pearl finishing PRL.  
Antique silver metal accessories and knobs with Swarovski, curved  
neutral crystal glass*





TAVOLO ALLUNGABILE art. 645  
Misure chiuso cm Ø 140 H. 78  
Misure aperto cm L. 190 P. 140 H. 78  
Tavolo allungabile con struttura in finitura Dolomite  
Lucido DLL e piano placcato rovere in finitura  
Cenere CNR

*TAVOLO ALLUNGABILE art. 645  
Dimensions closed cm. Ø 140 H. 78  
Dimensions open cm. L. 190 D. 140 H. 78  
Extendable table with structure in Gloss Dolomite  
DLL finishing and top veneered  
in oak finishing Ash CNR*

SEDIA art. 537  
Misure cm L. 55 P. 67 H. 101  
Sedia con struttura in finitura Dolomite Lucido DLL  
e rivestimento in pelle Nabuk 201

*CHAIR art. 537  
Dimensions cm. L. 55 D. 67 H. 101  
Chair with structure in Gloss Dolomite DLL finishing  
and covering in leather Nabuk 201*







BASE MOBILE DA SOGGIORNO art. 8200  
Misure cm L. 150 P. 45 H. 80

ALZATA MOBILE DA SOGGIORNO art. 8201  
Misure cm L. 153 P. 48 H. 140

Base e Alzata in finitura Perla Lucido PRL,  
con ripiani e schienale in finitura Perla Lucido PRL.  
Accessori in metallo Argento antico e pomoli con Swarovski,  
cristalli neutri curvati.

PIECE OF FURNITURE BASE FOR LIVING ROOM art. 8200  
Dimensions cm. L. 150 D. 45 H. 80

UPPER-LIFT PART PIECE OF FURNITURE FOR LIVING  
ROOM art. 8201

Dimensions cm. L. 153 D. 48 H. 140  
Base and upper-lift part in Gloss Pearl finishing PRL  
with shelves and back in Gloss Pearl finishing PRL.  
Antique silver metal accessories and knobs with Swarovski,  
curved neutral crystal glass











TAVOLINO art. 2630  
Misure cm. L. 130 P. 70 H. 48  
Tavolino da salotto con struttura in finitura Dolomite Lucido  
DLL, e piano in cristallo extra chiaro

*SIDE TABLE art. 2630*  
*Dimensions cm. L. 130 D. 70 H. 48*  
*Living room low table with structure in gloss Dolomite Finishing*  
*DLL, top in extra light crystal glass*







BASE MOBILE DA SOGGIORNO art. 8200  
Misure cm L. 150 P. 45 H. 80

ALZATA MOBILE DA SOGGIORNO art. 8203  
Misure cm L. 153 P. 48 H. 140

Base e Alzata in finitura Dolomite Lucido DLL, con ripiani e schienale in finitura Dolomite Lucido DLL.  
Accessori in metallo Argento antico e pomoli con Swarovski.

*PIECE OF FURNITURE BASE FOR LIVING ROOM  
art.8200  
Dimensions cm. L. 150 D. 45 H. 80*

*UPPER-LIFT PART PIECE OF FURNITURE FOR LIVING  
ROOM art. 8203*

*Dimensions cm. L. 153 D. 48 H. 140  
Base and upper-lift part in Gloss Dolomite DLL with shelves and  
back in Gloss Dolomite finishing DLL.  
Antique silver metal accessories and knobs with Swarovski*







BASE MOBILE DA SOGGIORNO art. 8200  
Misure cm L. 150 P. 45 H. 80

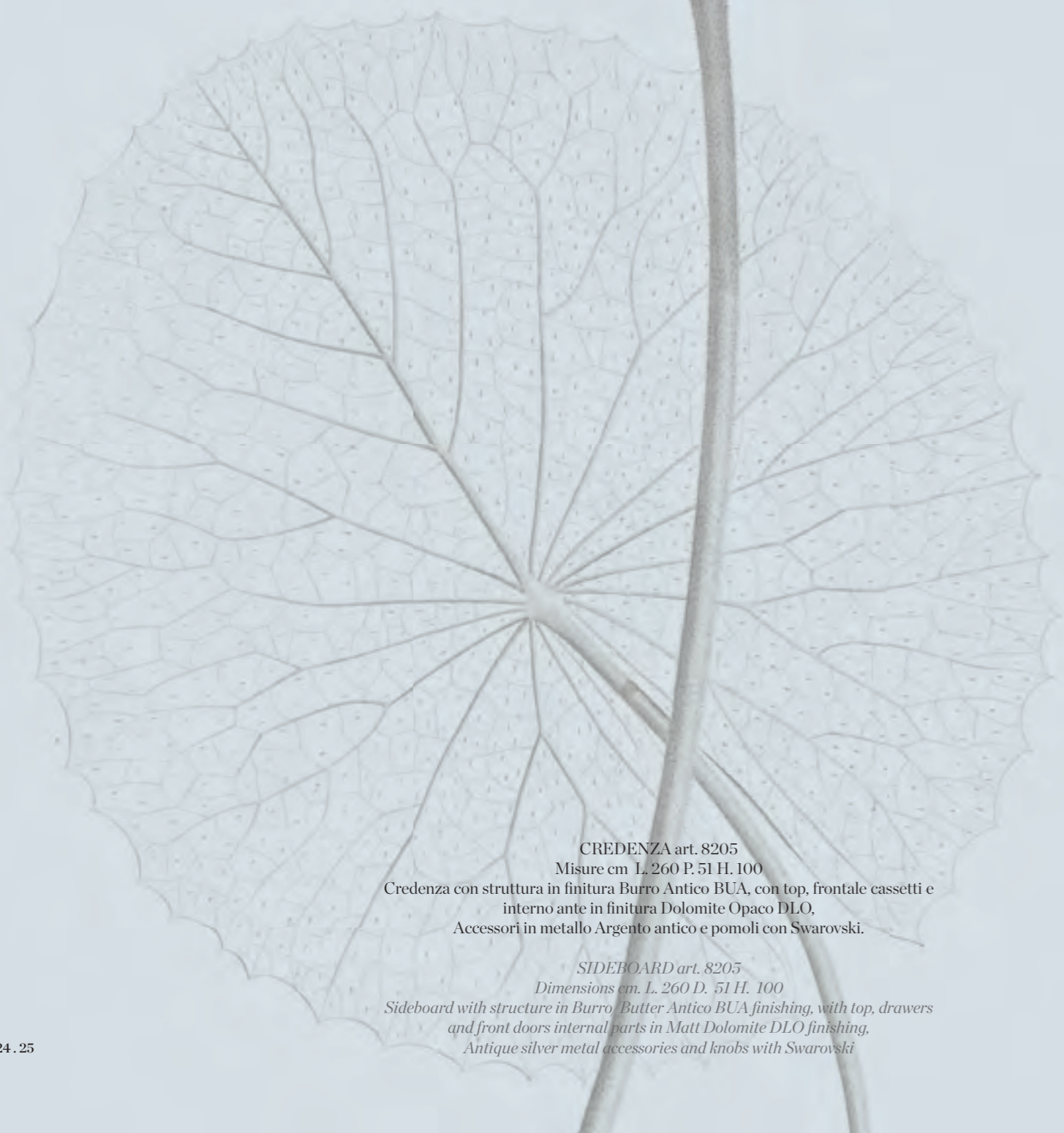
Base in finitura Dolomite Lucido DLL.  
Accessori in metallo Argento antico  
e pomoli con Swarovski.

*PIECE OF FURNITURE BASE  
FOR LIVING ROOM art.8200  
Dimensions cm. L. 150 D. 45 H. 80*

*Base in Gloss Dolomite DLL, finishing  
Antique silver metal accessories  
and knobs with Swarovski.*







CREDENZA art. 8205

Misure cm L. 260 P. 51 H. 100

Credenza con struttura in finitura Burro Antico BUA, con top, frontale cassetti e interno ante in finitura Dolomite Opaco DLO.  
Accessori in metallo Argento antico e pomoli con Swarovski.

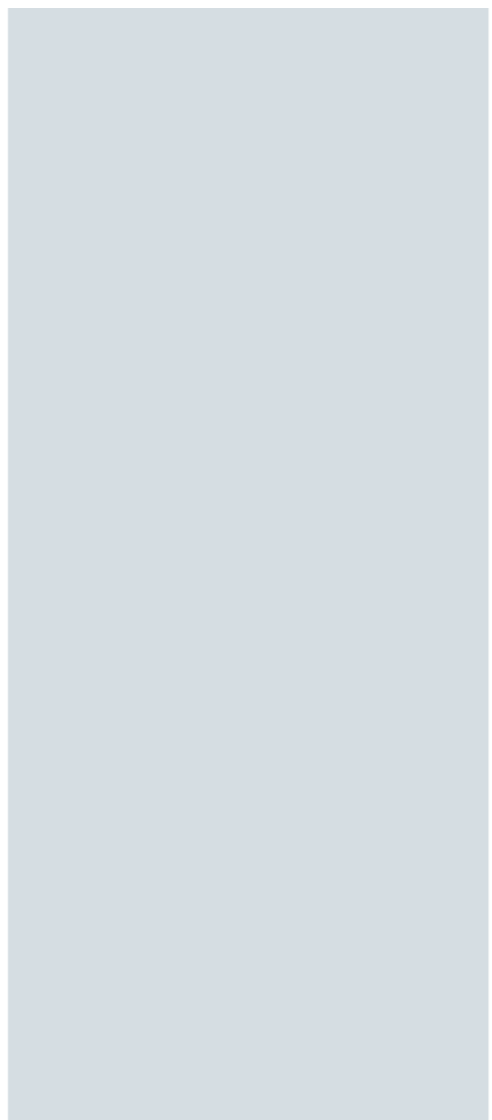
SIDEBOARD art. 8205

Dimensions cm. L. 260 D. 51 H. 100

Sideboard with structure in Burro Butter Antico BUA finishing, with top, drawers and front doors internal parts in Matt Dolomite DLO finishing.  
Antique silver metal accessories and knobs with Swarovski











*CREDENZA art. 8207*  
Misure cm L. 178 P. 52 H. 100  
Credenza con struttura in finitura Tortora Opaco TRO, con  
frontale cassetti e interno ante in finitura Quarzo QRZ,  
Accessori in metallo Argento antico e pomoli con Swarovski.

*SIDEBOARD art. 8207*  
Dimensions cm. L. 178 D. 52 H. 100  
Sideboard with structure in Matt Mud color FNO finishing, with  
drawers and front doors internal parts in quartz QRZ finishing  
Antique silver metal accessories and knobs with Swarovski





CREDENZA art. 8206  
Misure cm L. 150 P. 50 H. 100  
Credenza con struttura e top in finitura Cognac Antico COG, con frontale cassette e interno ante in finitura Burro Antico BUA. Accessori in metallo Argento antico e pomoli con Swarovski.

*SIDEBOARD art. 8206  
Dimensions cm L. 150 D. 50 H 100  
Sideboard with structure and top in Antique Cognac COG finishing, with drawers and front doors internal parts in Antique Butter BUA finishing. Antique silver metal accessories and knobs with Swarovski*















CREDENZA art. 8204  
 Misure cm L. 198 P. 51 H. 100  
 Credenza con struttura in finitura Cacao Lucido CCL e top in finitura Cacao Opaco CCO. Accessori in metallo Oro antico.

*SIDEBOARD art. 8204*  
 Dimensions cm L. 198 D. 51 H. 100  
 Sideboard with structure in gloss Cocoa CCL finishing and top in Matt Cocoa CCO finishing  
 Antique gold metal accessories

SEDIA art. 540  
 Misure cm L. 50 P. 59 H. 103  
 Sedia con struttura in finitura Cacao Lucido CCL e rivestimento in pelle Nabuk 204

*CHAIR art. 540*  
 Dimensions cm L. 50 D. 59 H. 103  
 Chair with Gloss Cocoa CCL finishing structure and covering with leather Nabuk 204

TAVOLO art. 646  
 Misure cm L. 200 P. 110 H. 78  
 Tavolo con struttura in finitura Cacao Lucido CCL e piano placcato rovere in finitura Castagna RCS

*TABLE art. 646*  
 Dimensions cm L. 200 D. 110 H. 78  
 Table with structure in Gloss Cocoa CCL finishing and top veneered in oak finishing Chestnut RCS





TAVOLO art. 646  
Misure cm L. 200 P. 110 H. 78  
Tavolo con struttura in finitura Cacao Lucido  
CCL e piano placcato rovere in finitura  
Castagna RCS

*TABLE art. 646  
Dimensions cm L. 200 D. 110 H. 78  
Table with structure in Gloss Cocoa CCL  
finishing and top veneered in oak finishing  
Chestnut RCS*

SEDIA art. 540  
Misure cm L. 50 P. 59 H. 103  
Sedia con struttura in finitura Cacao Lucido  
CCL e rivestimento in pelle Nabuk 204

*CHAIR art. 540  
Dimensions cm L. 50 D. 59 H. 103  
Chair with Gloss Cocoa CCL finishing structure  
and covering with leather Nabuk 204*











PORTA TV art. 8208  
 Misure cm L. 178 P. 52 H. 61  
 Porta TV con struttura in finitura Cacao Lucido CCL  
 e top in finitura Cacao Opaco CCO.  
 Accessori in metallo Oro antico e pomoli con Swarovski.

TV CABINET art. 8208  
 Dimensions cm L. 178 D. 52 H. 61  
 TV Cabinet with structure in Gloss Cocoa CCL finishing and top  
 finished in Matt Cocoa CCO.  
 Antique gold metal accessories and knobs with Swarovski







POLTRONA art. 597  
Misure cm. L. 64 P. 72 H. 78  
Struttura in finitura Cacao Lucido CCL e  
rivestimento in pelle Nabuk cod. 207

ARMCHAIR art. 597  
Dimensions cm. L. 64 D 72 H. 78  
Structure in Gloss Cocoa CCL finishing and covering  
in leather Nabuk cod. 207











COMODINO art. 8217  
 Misure cm L. 70 P. 42 H. 68  
 Top e struttura in finitura Burro Antico BUA,  
 con cassetti in finitura Perla Lucido PRL.  
 Accessori in metallo Oro antico  
 e pomoli con Swarovski.

NIGHT STAND art. 8217  
 Dimensioni cm L. 70 D. 42 H. 68  
 Top and structure in Antique Butter BUA  
 finishing, with drawers  
 in Gloss Pearl PRL finishing  
 Antique gold metal accessories and knobs  
 with Swarovski



LETTO art. 7735.1  
 Misure cm L. 210 P. 215 H. 140  
 Testiera sfoderabile con rivestimento anteriore in velluto cod 701  
 e posteriore in lana cod. 601. Giroletto sfoderabile rivestito in  
 velluto cod. 701 con gambe laccate in finitura Perla Lucido PRL.

BED art. 7735.1  
 Dimensions cm L. 210 D. 215 H. 140  
 Removable headboard covering, front part in Velvet cod. 701 and  
 back part in Wool cod. 601. Removable bedframe covering in  
 Velvet cod. 701 with lacquered legs in Gloss Pearl PRL.





COMÒ art. 8216  
Misure cm L. 120 P. 58 H. 105  
Top e struttura in finitura Burro Antico BUA,  
con cassetti in finitura Perla Lucido PRL.  
Accessori in metallo Oro antico  
e pomoli con Swarovski.

*CHEST art. 8216  
Dimensions cm L. 120 D. 58 H. 105  
Top and structure in Antique Butter BUA  
finishing, and drawers  
in Gloss Pearl PRL finishing  
Antique gold metal accessories  
and knobs with Swarovski.*

SPECCHIERA art. 6191  
Misure cm L. 100 H. 100  
Cornice in finitura Perla Lucido PRL  
e specchio neutro.

*MIRROR art. 6191  
Dimensions cm L. 100 H. 100  
Frame in Gloss Pearl PRL finishing  
and neutral mirror.*







**SPECCHIERA art. 6192**  
Misure cm L. 101 H. 186  
Cornice in finitura Perla Lucido PRL e specchio neutro.

*MIRROR art. 6192*  
Dimensions cm L. 101 H. 186  
Frame in Gloss Pearl PRL finishing and neutral mirror

**POLTRONCINA art. 541**  
Misure cm L. 66 P. 63 H. 87  
Poltroncina con struttura in finitura Perla Lucido PRL,  
rivestimento in velluto 701

*LITTLE ARMCHAIR art. 541*  
Dimensions cm L. 66 D. 63 H. 87  
Little armchair with Gloss Pearl PRL finishing structure and  
covering in velluto cod. 701





COMÒ art. 8216  
Misure cm L. 120 P. 58 H. 105  
Top e struttura in finitura Burro Antico BUA, con cassetti in  
finitura Perla Lucido PRL.  
Accessori in metallo Oro antico e pomoli con Swarovski.

CHEST art. 8216  
Dimensions cm L 120 D. 58 H. 105  
Top and structure in Antique Butter BUA finishing, and drawers  
in Gloss Pearl PRL finishing  
Antique gold metal accessories and knobs with Swarovski







SPECCHIERA art. 6192  
Misure cm L. 101 H. 186  
Cornice in finitura Tortora Lucido TRL e specchio neutro.

*MIRROR art. 6192  
Dimensions cm L. 101 H. 186  
Frame in Gloss Tortora TRL finishing and neutral mirror*

POLTRONCINA art. 541  
Misure cm L. 66 P. 63 H. 87  
Poltroncina con struttura in finitura Tortora Lucido TRL,  
rivestimento in velluto 703

*LITTLE ARMCHAIR art. 541  
Dimensions cm L. 66 D. 63 H. 87  
Little armchair with Gloss Tortora TRL finishing structure and  
covering in velluto cod. 703*





LETTO art. 7741.2  
Misure cm L. 250 P. 215 H. 170  
Testiera sfoderabile con rivestimento  
anteriore in Similpelle Vintage cod.  
306 e Lana cod. 613 , posteriore in  
Velluto cod. 704. Gambe e giroletto  
laccati in finitura Dolomite Lucido DLL.

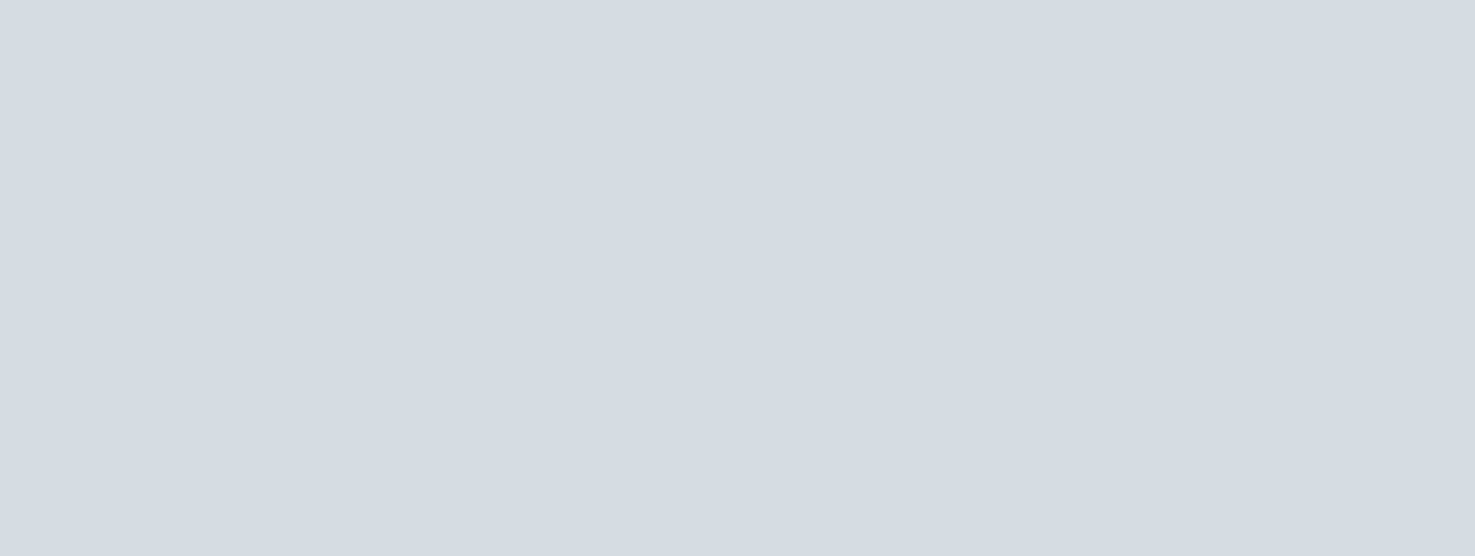
*BED art. 7741.2  
Dimensions cm L. 250 D. 215 H. 170  
Removable headboard covering, front  
part in Leatherette Vintage cod. 306  
and Wool cod. 613; back part in Velvet  
cod. 704. Legs and bedframe lacquered  
in Gloss Dolomite DLL.*

COMODINO - POUFF art. 600  
Misure cm Ø 51 H. 42  
Struttura rivestita in Similpelle  
Vintage cod. 306.

*NIGHT STAND art. 600  
Dimensions cm Ø 51 H. 42  
Structure covered in Leatherette  
Vintage cod. 306.*











COMODINO - POUFF art. 600  
 Misure cm Ø 51 H. 42  
 Struttura rivestita in Similpelle  
 Vintage cod. 306.

*NIGHT STAND art. 600  
 Dimensions cm Ø 51 H. 42  
 Structure covered in Leatherette  
 Vintage cod. 306.*

COMODINO - POUFF art. 601  
 Misure cm Ø 51 H. 45  
 Struttura rivestita in Similpelle Vintage  
 cod. 306 con piano laccato Perla Lucido  
 PRL o Similpelle Vintage cod. 301 con  
 piano laccato Dolomite Lucido DLL.

*NIGHT STAND art. 601  
 Dimensions cm Ø 51 H. 45  
 Structure covered in Leatherette  
 Vintage cod. 306 with lacquered  
 top Gloss Pearl PRL finishing or  
 Leatherette Vintage cod. 301 with  
 lacquered top  
 Gloss Dolomite DLL finishing.*







COMÒ art. 8215  
Misure cm L. 97 P. 51 H. 118  
Top e struttura in finitura Dolomite Opaco DLO, con cassetti in  
finitura Dolomite Lucido DLL.  
Accessori in metallo Argento antico e pomoli con Swarovski.

CHEST art. 8215  
Dimensions cm L. 97 D. 51 H. 118  
Top and structure in Matt Dolomite DLO finishing, and drawers  
in Gloss Dolomite DLL finishing  
Antique silver metal accessories and knobs with Swarovski





chapter . 02

# Country Club

I see trees of green red roses too  
Almost heaven, West Virginia  
Blue Ridge Mountains, Shanandoah River  
Life is old there, older than the trees  
Younger than the mountains  
Growin' like a breeze

Country Roads, take me home  
To the place I belong  
West Virginia Mountain momma  
Take me home Country Roads

All my mem'ries gather 'round her  
Miner's lady, strangers to blue water  
Dark and dusty, painted on the sky  
Misty taste of moonshine  
Tear drops in my eye

Country Roads, take me home  
To the place I belong  
West Virginia Mountain momma  
Take me home Country Roads  
Take me home Country Roads

....

*Lynyrd Skynyrd, Sweet Home Alabama, 1974*











BASE CREDENZA art. 8240  
Misure cm L. 178 P. 48 H. 80

ALZATA per CREDENZA art. 8241  
Misure cm L. 180 P. 43 H. 135

Base e Alzata in finitura Dolomite Antico DLA, con zoccolo, profili ante, ripiani e cassetto in finitura Cognac Antico COG. Accessori in metallo Oro antico con inserto nero lucido. Ante scorrevoli con cristalli neutri.

SIDEBOARD BASE art. 8240  
Dimensions cm L. 178 D. 48 H. 80

UPPER-LIFT FOR SIDEBOARD art. 8241  
Dimensions cm. L. 180 D. 43 H. 135

Base and upper-lift part in Antique Dolomite DLA finishing, with basement part, front doors borders, shelves and drawer in Antique Cognac COG finishing. Antique gold metal accessories with gloss black insert. Sliding front doors with neutral crystal glass









TAVOLO ALLUNGABILE art. 640  
Misure chiuso cm L. 180 P. 95 H. 78  
Misure aperto cm L. 280 P. 95 H. 78  
Tavolo allungabile con struttura in finitura Burro Antico BUA e piano in  
finitura Cognac Antico COG  
con cornice in finitura Dolomite Antico DLA

*EXTENDABLE TABLE art. 640  
Dimensions closed cm. L. 180 D. 95 H. 78  
Dimensions open cm. L. 280 D. 95 H. 78  
Extendable table with structure in antique butter BUA finishing; top in  
antique cognac COG finishing with antique dolomite DLA finishing frame.*





SEDIA art. 538  
Misure cm. L. 53 P. 60 H. 92  
Struttura in finitura Dolomite Antico DLA e  
rivestimento in pelle cod. 106

CHAIR art. 538  
Dimensions cm. L. 53 D. 60 H. 92  
Structure in Antique Dolomite DLA finishing  
and covering in leather cod. 106















**MOBILE VETRINA art. 8246**  
Misure cm L. 92 P. 44 H. 146  
Struttura e ripiani in finitura Verde Oliva Antico VOA, con zoccolo e profili ante in finitura Castagna RCS. Accessori in metallo Oro antico, ante con cristalli neutri.

*SHOWCASE art. 8246*  
*Dimensions cm. L. 92 D. 44 H. 146*  
*Structure and shelves in Antique Olive Green VOA finishing, with basement part, front doors borders in Chestnut RCS finishing. Antique gold metal accessories. Doors with neutral crystal glass*

**TAVOLINO art. 2642**  
Misure cm L. 130 P. 70 H. 45  
Struttura in finitura Verde Oliva Antico VOA, top in finitura Cacao Lucido CCL, cornici in finitura Castagna RCS.

*COFFEE TABLE art. 2642*  
*Dimensions cm. L. 130 D. 70 H. 45*  
*Structure in Antique Olive Green VOA finishing, top with gloss Cocoa CCL finishing, frames with Chestnut RCS finishing*

**POLTRONCINA art. 587 DX**  
Misure cm L. 72 P. 88 H. 74  
Poltrona rivestita in pelle cod. 105

*ARMCHAIR art. 587 DX*  
*Dimensions cm. L. 72 D. 88 H. 74*  
*Armchair covered in leather cod. 105*







POLTRONCINA art. 587 SX  
Misure cm L. 72 P. 88 H. 74  
Poltrona rivestita in pelle cod. 105

ARMCHAIR art. 587 SX  
Dimensions cm. L. 72 D. 88 H. 74  
Armchair covered in leather cod. 105





POLTRONCINA art. 587 SX e 587 DX  
Misure cm L. 72 P. 88 H. 74  
Poltrona rivestita in pelle cod. 103

*LITTLE ARMCHAIR  
art. 587 SX and art. 587 DX  
Dimensions cm L. 72 D. 88 H. 74  
Armchair covered in leather cod. 103*

BASE CREDENZA art. 8240  
Misure cm L. 178 P. 48 H. 80  
Top e struttura in finitura Burro Antico BUA, con  
cassetti e ante in finitura Perla Lucido PRL con  
zoccolo e profili ante  
in finitura Cognac Antico COG,  
Accessori in metallo Oro antico  
con inserto argento antico.

*BASE CUPBOARD art. 8240  
Dimensions cm. L. 178 D. 48 H. 80  
Top and structure in antique butter BUA  
finishing, with drawers and front doors in Gloss  
Pearl PRL finishing, with basement part, front  
doors borders in Antique Cognac COG finishing.  
Antique gold metal accessories  
with antique silver insert.*

TAVOLINO art. 2641  
Misure cm L. 90 P. 60 H. 45  
Struttura in finitura Burro Antico BUA, top in  
finitura Perla Lucido PRL, cornici in finitura  
Cognac Antico COG.

*COFFEE TABLE art. 2641  
Dimensions cm. L. 90 D. 60 H. 45  
Structure in antique butter BUA finishing, top with  
Gloss Pearl PRL finishing, frames  
in antique cognac COG finishing.*







**BASE CREDENZA art. 8240**  
 Misure cm L. 178 P. 48 H. 80  
 Top e struttura in finitura Burro Antico BUA, con cassetti e ante in finitura Perla Lucido PRL con zoccolo e profili ante in finitura Cognac Antico COG, Accessori in metallo Oro antico con inserto argento antico.

*BASE CUPBOARD art. 8240*  
*Dimensions cm. L. 178 D. 48 H. 80*  
*Top and structure in antique butter BUA finishing, with drawers and front doors in Gloss Pearl PRL finishing, with basement part, front doors borders in Antique Cognac COG finishing. Antique gold metal accessories with antique silver insert*

**TAVOLINO art. 2641**  
 Misure cm L. 90 P. 60 H. 45  
 Struttura in finitura Burro Antico BUA, top in finitura Perla Lucido PRL, cornici in finitura Cognac Antico COG.

*COFFEE TABLE art. 2641*  
*Dimensions cm. L. 90 D. 60 H. 45*  
*Structure in antique butter BUA finishing, top with Gloss Pearl PRL finishing, frames in antique cognac COG finishing.*

**POLTRONCINA art. 587 SX e 587 DX**  
 Misure cm L. 72 P. 88 H. 74  
 Poltrona rivestita in pelle cod. 103

*ARMCHAIR art. 587 SX e 587 DX*  
*Dimensions cm. L. 72 D. 88 H. 74*  
*Armchair covered in leather cod. 103*











LIBRERIA COMPONIBILE  
 composizione nr. 002 L. 262 P. 43 H. 230

- nr. 3 - art. 8255 struttura L. 92 P. 43 H. 230
- nr. 2 - art. 8255/A contenitore a giorno L. 79 P. 39 H. 41
- nr. 2 - art. 8255/C contenitore a cassetti L. 79 P. 39 H. 41
- nr. 4 art. 8255/B contenitore con anta L. 79 P. 39 H. 41

Struttura in finitura Burro Antico BUA, con schienale, cassetti e ante in finitura Perla Lucido PRL, zoccolo e profili ripiani in finitura Cognac Antico COG,

Accessori in metallo Oro antico con inserto Argento antico.

MODULAR BOOKCASE  
 Composition nr. 002 L. 262 D. 43 H. 230

- nr. 3 - art. 8255 structure L. 92 D. 43 H. 230
- nr. 2 - art. 8255/A open container L. 79 D. 39 H. 41
- nr. 2 - art. 8255/C drawers container L. 79 D. 39 H. 41
- nr. 4 art. 8255/B front-door-closing container L. 79 D. 39 H. 41

Structure in Antique Butter BUA finishing, back, drawers and front doors with Gloss Pearl PRL finishing, with basement part, shelves borders in Antique Cognac COG finishing. Antique golden metal accessories with antique silver insert.







LIBRERIA COMPONIBILE (pagina precedente)

composizione nr. 003 L. 347 P. 43 H. 230

nr. 4 - art. 8255 struttura L. 92 P. 43 H. 230

Struttura in finitura Burro Antico BUA, con schienale in finitura Perla Lucido PRL, zoccolo e profili ripiani in finitura Cognac Antico COG.

MODULAR BOOKCASE (previous page)

Composition nr. 003 L. 347 D. 43 H. 230

Nr. 4 - art. 8255 structure L. 92 D. 43 H. 230

Structure in Antique Butter BUA finishing, back with Gloss Pearl PRL finishing, with basement part, shelves borders in Antique Cognac COG finishing

LIBRERIA COMPONIBILE

composizione nr. 001

nr. 1 - art. 8255 struttura L. 92 P. 43 H. 230

nr. 2 - art. 8255/A contenitore a giorno L. 79 P. 39 H. 41

Struttura in finitura Burro Antico BUA, con schienale in finitura Perla Lucido PRL, zoccolo e profili ripiani in finitura Cognac Antico COG.

MODULAR BOOKCASE

composition nr. 001

nr. 1 - art. 8255 structure L. 92 D. 43 H. 230

nr. 2 - art. 8255/A open container L. 79 D. 39 H. 41

Structure in Antique Butter BUA finishing, back with Gloss Pearl PRL finishing, with basement part, shelves borders in Antique Cognac COG finishing

POLTRONCINA art. 587 SX

Misure cm L. 72 P. 88 H. 74

Poltrona rivestita in pelle cod. 106

ARMCHAIR art. 587 SX

Dimensions cm. L. 72 D. 88 H. 74

Armchair covered in leather cod. 106











PORTA TV art. 8250 (pag. precedente)  
 Misure cm L. 180 P. 55 H. 60  
 Struttura in finitura Dolomite Opaco DLO, con cassetti e profili  
 anta vasistas in finitura Cacao Lucido CCL, zoccolo in finitura  
 Cognac Antico COG.  
 Accessori in metallo Oro antico con inserto nero lucido.  
 Il vano è illuminato con impianto luce led.

*TELEVISION UNIT SET (previous page)*  
 Dimensions cm L. 180 D. 55 H. 60  
 Structure in Matt Dolomite DLO finishing, drawers and transom  
 front door borders in Gloss Cocoa CCL finishing, basement part  
 with Antique Cognac COG finishing  
 The compartment is illuminated with LED light system.

SERVETTO art. 2640 (pag. precedente)  
 Misure cm L. 45 P. 45 H. 60  
 Struttura in finitura Dolomite Opaco DLO, top in finitura Cacao  
 Lucido CCL, cornici in finitura Cognac Antico COG.

*SIDE TABLE art. 2640 (previous page)*  
 Dimensions cm L. 45 D. 45 H. 60  
 Structure in Matt Dolomite DLO finishing, top with Gloss Cocoa  
 CCL finishing, frames with Antique Cognac COG finishing

TAVOLINO art. 2642 (pag. precedente)  
 Misure cm L. 130 P. 70 H. 45  
 Struttura in finitura Dolomite Opaco DLO, top in finitura Cacao  
 Lucido CCL, cornici in finitura Cognac Antico COG.

*COFFEE TABLE art. 2642 (previous page)*  
 Dimensions cm L. 130 D. 70 H. 45  
 Structure with Matt Dolomite DLO finishing, top with Gloss  
 Cocoa CCL finishing, frames with Antique Cognac COG finishing

CONSOLE art. 7580  
 Misure cm L. 145 P. 45 H. 78  
 Struttura in finitura Dolomite Opaco DLO, top e cassetti in  
 finitura Cacao Lucido CCL, cornici in finitura Cognac Antico  
 COG. Accessori in metallo Oro antico con inserto nero lucido.

*CONSOLE art. 7580*  
 Dimensions cm L. 145 D. 45 H. 78  
 Structure with matt dolomite DLO finishing, top and drawers  
 with Gloss Cocoa CCL finishing, frames with Antique Cognac  
 COG finishing. Antique golden metal accessories with gloss black  
 insert







TAVOLINO art. 2642  
Misure cm L. 130 P. 70 H. 45  
Struttura in finitura Dolomite Opaco  
DLO, top in finitura Cacao Lucido CCL,  
cornici in finitura Cognac Antico COG.

COFFEE TABLE art. 2642  
Dimensions cm L. 130 D. 70 H. 45  
Structure with Matt Dolomite DLO  
finishing, top with Gloss Cocoa CCL  
finishing, frames with Antique Cognac  
COG finishing











SCRIVANIA art. 6840 (pag. precedente)  
 Misure cm L. 156 P. 80 H. 78  
 Scrivania con struttura e profilo piano in finitura  
 Cognac Antico COG, piano e cassetti in finitura Creta  
 Antico GCA. Accessori in metallo Oro Antico con  
 inserto nero lucido

*DESK art. 6840 (previous page)*  
 Dimensions cm L. 156 D. 80 H. 78  
 Desk with structure and top borders with Antique  
 Cognac COG finishing, top and drawers in Antique  
 Clay GCA finishing. Antique golden metal accessories  
 with gloss black insert.

POLTRONCINA art. 539 (pag. precedente)  
 Misure cm L. 57 P. 60 H. 78  
 Poltroncina con struttura in finitura Cognac Antico  
 COG, rivestimento posteriore in Pagli di Vienna e  
 anteriore in pelle cod. 106

*LITTLE ARMCHAIR art. 539 (previous page)*  
 Dimensions cm L. 57 D. 60 H. 78  
 Armchair with Antique Cognac COG finishing, reverse  
 in Vienna Straw and front leather cod. 106

LIBRERIA COMPONENTE  
 composizione nr. 004 L. 262 P. 44 H. 146  
 nr. 3 - art. 8246 mobile vetrina L. 92 P. 44 H. 146  
 Struttura in finitura Creta Antico cod GCA, con  
 zoccolo e profili ante in finitura Cognac Antico COG,  
 Accessori in metallo Oro antico.

*MODULAR BOOKCASE*  
 Composition nr. 004 L. 262 D. 44 H. 146  
 nr. 3 - art. 8246 bookcase/cupboard L. 92 D. 44 H. 146  
 Structure with Antique Clay GCA finishing, with  
 basement part and front doors borders in Antique  
 Cognac COG finishing.  
 Antique golden metal accessories.













MOBILE VETRINA art. 8245 (pag. precedente)  
 Misure cm L. 138 P. 43 H. 210  
 Struttura e ante in finitura Burro Antico BUA, con  
 zoccolo e profili ante e ripiani in finitura Cognac  
 Antico COG,  
 Accessori in metallo Argento antico

*CUPBOARD PIECE OF FURNITURE art. 8245  
 (previous page)  
 Dimensions cm L. 138 D.43 H. 210  
 Structure and front doors with Antique Butter BUA  
 finishing, with basement part and front doors borders  
 in Antique Cognac COG finishing  
 Antique silver metal accessories*

SCRIVANIA art. 6840 (pag. precedente)  
 Misure cm L. 156 P. 80 H. 78  
 Scrivania con struttura e profilo piano in finitura  
 Cognac Antico COG, piano e cassetti in finitura  
 Burro Antico cod BUA. Accessori in metallo Oro  
 Antico con inserto Argento antico

*DESK art. 6840 (previous page)  
 Dimensions cm L. 156 D. 80 H. 78  
 Desk with structure and top borders with Antique  
 Cognac COG finishing, top and drawers in Antique  
 Butter cod. BUA finishing. Antique golden metal  
 accessories with antique silver insert*







POLTRONCINA art. 539  
Misure cm L. 57 P. 60 H. 78  
Poltroncina con struttura in finitura Cognac Antico COG,  
rivestimento posteriore in Pagli di Vienna e anteriore in  
pelle cod. 106

LITTLE ARMCHAIR art. 539  
Dimensions cm L. 57 D. 60 H. 78  
Armchair with Antique Cognac COG finishing, reverse in  
Vienna Straw and front leather cod. 106





chapter . 03

# Rosewood

Well, early in the morning I wake with the rising sun  
Yes, early in the morning I wake with the rising sun  
It's my daily motto and the people all calls it fun

Yes, I'm looking for a better future  
and forgetting about the past  
I'm looking for a better future and forgetting about the past  
Now I'm so glad that troubles don't always last

Yes, have fun whilst you can 'cause fate's an awful thing  
Well, have fun whilst you can 'cause fate's an awful thing  
You can't tell what may happen that's the reason I love to sing...

*Nat King Cole, early in the morning, 1967*









*pagina precedente  
previus page*

CREDENZA art. 8258  
Misure cm L. 164 P. 62 H. 88  
Struttura in Noce Caramello NCR, con top,  
ante e fianchi placcati rovere in finitura Noce  
Caramello NCR. Ante e cassetti interni dotati  
di tecnologia spingi-apri (*blum*®).

*SIDEBOARD art. 8258  
Dimensions cm L. 164 D. 62 H. 88  
Structure in caramel walnut NCR, with top, front  
doors and sides veneered in oak Caramel Walnut  
NCR finishing. Front doors and drawers supplied  
with internal technology push-pull (blum®)*

TAVOLO DA PRANZO art. 649  
Misure cm L. 180 P. 105 H. 77  
Tavolo con struttura in finitura Noce Caramello  
NCR e piano placcato rovere in finitura Noce  
Caramello NCR

*LUNCH TABLE art. 649  
Dimensions cm. L. 180 D. 105 H. 77  
Table with structure caramel walnut NCR finishing  
and top veneered in oak Caramel Walnut NCR  
finishing*

SEDIA art. 535  
Misure cm L. 52 P. 58 H. 105  
Struttura in finitura Noce Caramello NCR con  
rivestimento in similpelle vintage cod. 303

*CHAIR art. 535  
Dimensions cm L. 52 D. 58 H. 105  
Structure in Caramel Walnut NCR with covering in  
leatherette vintage cod. 303*







TAVOLO DA PRANZO art. 649  
Misure cm L. 180 P. 105 H. 77  
Tavolo con struttura in finitura Noce Caramello  
NCR e piano placcato rovere in finitura Noce  
Caramello NCR

*LUNCH TABLE art. 649  
Dimensions cm. L. 180 D. 105 H. 77  
Table with structure Caramel Walnut NCR  
finishing and top veneered in oak Caramel  
Walnut NCR finishing*

SEDIA art. 535  
Misure cm L. 52 P. 58 H. 105  
Struttura in finitura Noce Caramello NCR con  
rivestimento in similpelle vintage cod. 303

*CHAIR art. 535  
Dimensions cm L. 52 D. 58 H. 105  
Structure in Caramel Walnut NCR with  
covering in leatherette vintage cod. 303*





TAVOLO DA PRANZO art. 649  
Misure cm L. 180 P. 105 H. 77  
Tavolo con struttura in finitura Noce  
Caramello NCR e piano placcato  
rovere in finitura Noce Caramello NCR

LUNCH TABLE art. 649  
Dimensions cm. L. 180 D. 105 H. 77  
Table with structure Caramel Walnut  
NCR finishing and top veneered in  
oak Caramel Walnut NCR finishing

SEDIA art. 535  
Misure cm L. 52 P. 58 H. 105  
Struttura in finitura Noce  
Caramello NCR con rivestimento  
in similpelle vintage cod. 303

CHAIR art. 535  
Dimensions cm L. 52 D. 58 H. 105  
Structure in Caramel Walnut NCR  
with covering in leatherette vintage  
cod. 303







CREDENZA art. 8258  
Misure cm L. 164 P. 62 H. 88  
Struttura in Noce Caramello NCR, con top,  
ante e fianchi placcati rovere in finitura Noce  
Caramello NCR. Ante e cassetti interni dotati  
di tecnologia spingi-apri (*blum*®).

*SIDEBOARD art. 8258*  
*Dimensions cm L. 164 D. 62 H. 88*  
*Structure in Caramel Walnut NCR, with top,*  
*front doors and sides veneered in oak; Caramel*  
*Walnut NCR finishing. Front doors and drawers*  
*supplied with internal technology push-pull*  
*(blum®)*









CREDENZA art. 8258  
Misure cm L. 164 P. 62 H. 88  
Struttura in Noce Caramello NCR, con top,  
ante e fianchi placcati rovere in finitura Noce  
Caramello NCR. Ante e cassetti interni dotati  
di tecnologia spingi-apri (*blum*®).

SIDEBOARD art. 8258  
Dimensions cm L. 164 D. 62 H. 88  
Structure in caramel walnut NCR, with top,  
front doors and sides veneered in oak Caramel  
Walnut NCR finishing. Front doors and drawers  
supplied with internal technology push-pull  
(*blum*®)

TAVOLINO art. 2643  
Misure cm L. 135 P. 70 H. 45  
Tavolino con struttura in finitura Noce  
Caramello NCR e piano placcato rovere in  
finitura Noce Caramello NCR

COFFEE TABLE art. 2643  
Dimensions cm L. 135 D. 70 H. 45  
Coffee table with structure Caramel Walnut  
NCR finishing and top veneered in oak Caramel  
Walnut NCR finishing

MOBILE CASSETTIERA art. 8269  
Misure cm L. 73 P. 47 H. 148  
Struttura in Noce Caramello NCR, con top,  
fianchi e cassetti placcati rovere in finitura  
Noce Caramello NCR. Cassetti sono dotati di  
tecnologia spingi-apri (*blum*®).

CHEST OF DRAWERS art. 8269  
Dimensions cm L. 73 D. 47 H. 148  
Structure in Caramel Walnut NCR, with top,  
sides and drawers veneered in oak Caramel  
Walnut NCR finishing. Drawers supplied with  
internal technology push-pull (*blum*®)

RETRO DIVANO art. 8262  
Misure cm L. 163 P. 50 H. 82  
Struttura in Noce Caramello NCR, con top,  
fianchi e cassetti placcati rovere in finitura  
Noce Caramello NCR. Cassetti sono dotati di  
tecnologia spingi-apri (*blum*®).

BACK SOFA art. 8262  
Dimensions cm L. 163 D. 50 H. 82  
Structure in Caramel Walnut NCR, with top,  
sides and drawers veneered in oak Caramel  
Walnut NCR finishing. Drawers supplied with  
internal technology push-pull (*blum*®)









MOBILE CASSETTIERA art. 8269  
Misure cm L. 73 P. 47 H. 148  
Struttura in Noce Caramello NCR, con top, fianchi e cassetti  
placcati rovere in finitura Noce Caramello NCR.  
Cassetti dotati di tecnologia spingi-apri (blum®).

CHEST OF DRAWERS art. 8269  
Dimensions cm. L. 73 D. 47 H. 148  
Structure in Caramel Walnut NCR, with top, sides and drawers  
veneered in oak Caramel Walnut NCR finishing.  
Drawers supplied with internal technology push-pull (blum®).

Rosewood



RETRO DIVANO art. 8262  
Misure cm L. 163 P. 50 H. 82  
Struttura in Noce Caramello NCR, con top,  
fianchi e cassetti placcati rovere in finitura  
Noce Caramello NCR. Cassetti sono dotati di  
tecnologia spingi-apri (*blum*®).

*BACK SOFA art. 8262*  
*Dimensions cm. L. 163 D. 50 H. 82*  
*Structure in Caramel Walnut NCR, with top,*  
*sides and drawers veneered in oak Caramel*  
*Walnut NCR finishing. Drawers supplied with*  
*internal technology push-pull (*blum*®)*









LETTO art. 7746 (pag. precedente)  
Misure cm L. 220 P. 215 H. 146  
Rete/Materasso misure 180 x 200  
Testiera imbottita con rivestimento in similpelle  
vintage cod. 302, giroletto sfoderabile con  
gambe in finitura Noce Caramello NCR.

*BED art. 7746 (previous page)*  
*Dimensions cm L. 220 D. 215 H. 146*  
*Bedspring/Mattress dimensions 180 x 200*  
*Upholstered headboard with covering in*  
*leatherette Vintage cod. 302, removable*  
*upholstered bedframe and legs with Caramel*  
*Walnut NCR finishing.*

COMO' art. 8265  
Misure cm L. 142 P. 58 H. 107  
Struttura in Noce Caramello NCR, con top,  
fianchi e cassetti placcati rovere in finitura  
Noce Caramello NCR. Cassetti sono dotati di  
tecnologia spingi-apri (*blum*®).

*CHEST ART. 8265*  
*Dimensions cm. L. 142 D. 58 H. 107*  
*Structure in caramel walnut NCR, with top,*  
*sides and drawers veneered in oak Caramel*  
*Walnut NCR finishing. Drawers supplied with*  
*internal technology push-pull (blum®)*

COMODINO art. 8267  
Misure cm L. 65 P. 43 H. 62  
Struttura in Noce Caramello NCR, con top,  
fianchi e cassetti placcati rovere in finitura  
Noce Caramello NCR. Cassetti sono dotati di  
tecnologia spingi-apri (*blum*®).

*NIGHT STAND art. 8267*  
*Dimensions cm L. 65 D. 43 H. 62*  
*Structure in caramel walnut NCR, with top,*  
*sides and drawers veneered in oak Caramel*  
*Walnut NCR finishing. Drawers supplied with*  
*internal technology push-pull (blum®)*







ARMADIO art. 8273  
Misure cm L. 205 P. 65 H. 230  
Struttura in Noce Caramello NCR, con fianchi  
e ante scorrevoli placcati rovere in finitura Noce  
Caramello NCR, specchio bronzato.

WARDROBE art. 8273  
Dimensions cm. L. 205 D. 65 H. 230  
Structure in Caramel Walnut NCR, with sides  
and sliding front doors veneered in oak Caramel  
Walnut NCR finishing; bronzed mirror.







ARMADIO art. 8273  
Misure cm L. 205 P. 65 H. 230  
Struttura in Noce Caramello NCR, con fianchi  
e ante scorrevoli placcati rovere in finitura Noce  
Caramello NCR, specchio bronzato.

WARDROBE art. 8273  
Dimensions cm. L. 205 D. 65 H. 230  
Structure in Caramel Walnut NCR, with sides  
and sliding front doors veneered in oak Caramel  
Walnut NCR finishing; bronzed mirror.





PANCHETTA art. 543  
Misure cm L. 126 P. 45 H. 44  
Struttura in finitura Noce Caramello NCR con  
rivestimento in Similpelle vintage cod. 302

SMALL BENCH art. 543  
Dimensions cm L. 126 D. 45 H. 44  
Structure in Caramel Walnut NCR with  
covering in leatherette vintage cod. 302





RETRO DIVANO art. 8263  
Misure cm L. 163 P. 50 H. 82  
Struttura in finitura Ghiaccio GHC, con top e fianchi placcati rovere in finitura Ghiaccio GHC.

BACK SOFA art. 8263  
Dimensioni cm L. 163 D. 50 H. 82  
Structure in Ice GHC finishing, with top and sides veneered in oak Ice GHC finishing

ÉTAGÈRE art. 8264  
Misure cm L. 73 P. 47 H. 148  
Struttura in finitura Ghiaccio GHC, con top e ripiani placcati rovere in finitura Ghiaccio GHC.

ÉTAGÈRE art. 8264  
Dimensioni cm L. 73 D. 47 H. 148  
Structure in Ice GHC finishing, with top and shelves veneered in oak Ice GHC finishing.

CREDENZA art. 8258  
Misure cm L. 164 P. 62 H. 88  
Struttura in finitura Ghiaccio GHC, con top, ante e fianchi placcati rovere in finitura Ghiaccio GHC. Ante e cassetti interni dotati di tecnologia spingi-apri (blum®).

SIDEBOARD art. 8258  
Dimensioni cm L. 164 D. 62 H. 88  
Structure in Ice GHC finishing, with top, front doors and sides veneered in oak Ice GHC finishing. Front doors and internal drawers supplied with push-pull technology (blum®)









ÉTAGÈRE art. 8264  
Misure cm L. 73 P. 47 H. 148  
Struttura in finitura Ghiaccio GHC, con top e  
ripiani placcati rovere in finitura  
Ghiaccio GHC.

ÉTAGÈRE art. 8264  
Dimensions cm L. 73 D. 47 H. 148  
Structure in Ice GHC finishing, with top and  
shelves veneered in oak Ice GHC finishing.







TAVOLO DA PRANZO art. 649  
Misure cm L. 180 P. 105 H. 77  
Tavolo con struttura in finitura Ghiaccio GHC e  
piano placcato rovere in finitura Ghiaccio GHC.

LUNCH TABLE art. 649  
Dimensions cm. L. 180 D. 105 H. 77  
Table with structure in Ice GHC finishing and  
top veneered in oak Ice GHC finishing.

SEDIA art. 542  
Misure cm L. 55 P. 63 H. 110  
Sedia con struttura in finitura Ghiaccio GHC e  
rivestimento in lana cod. 604

CHAIR art. 542  
Dimensions cm. L. 55 D. 63 H. 110  
Chair with structure in Ice GHC finishing and  
covering in wool cod. 604

CREDENZA art. 8258  
Misure cm L. 164 P. 62 H. 88  
Struttura in finitura Ghiaccio GHC, con  
top, ante e fianchi placcati rovere in finitura  
Ghiaccio GHC. Ante e cassetti interni dotati di  
tecnologia spingi-apri (blum®).

SIDEBOARD art. 8258  
Dimensions cm L. 164 D. 62 H. 88  
Structure in Ice GHC finishing, with top, front  
doors and sides veneered in oak Ice GHC  
finishing. Front doors and internal drawers  
supplied with push-pull technology (blum®)



LETTO art. 7748  
Misure cm L. 160 P. 215 H. 160  
Rete/Materasso misure 120 x 200  
Testiera imbottita con rivestimento in lana cod.  
615, giroletto sfoderabile e gambe in finitura  
Ghiaccio GHC

BED art. 7748  
Dimensions cm L. 160 D. 215 H. 160  
Bedspring/Mattress dimensions 120 x 200  
Upholstered headboard with covering in wool cod.  
615, removable upholstered bedframe and legs  
with Ice GHC finishing

COMO' art. 8265  
Misure cm L. 142 P. 58 H. 107  
Struttura in finitura Ghiaccio GHC, con top,  
fianchi e cassetti placcati rovere in finitura  
Ghiaccio GHC. Cassetti sono dotati di tecnologia  
spingi-apri (blum®).

CHEST ART. 8265  
Dimensions cm. L. 142 D. 58 H. 107  
Structure in Ice GHC finishing, with top, sides  
and drawers veneered in oak Ice GHC finishing.  
Drawers supplied with internal  
technology push-pull (blum®)

SPECCHIO art. 6193  
Misure cm. L. 86 H. 106  
Cornice in finitura Ghiaccio GHC  
specchio neutro.

MIRROR ART. 6193  
Dimensions cm. L. 86 H. 106  
Frame in Ice GHC finishing, neutral mirror

COMODINO art. 8267  
Misure cm L. 65 P. 43 H. 62  
Struttura in finitura Ghiaccio GHC, con top,  
fianchi e cassetti placcati rovere in finitura  
Ghiaccio GHC. Cassetti sono dotati di tecnologia  
spingi-apri (blum®).

NIGHT STAND art. 8267  
Dimensions cm L. 65 D. 43 H. 62  
Structure in Ice GHC finishing, with top, sides  
and drawers veneered in oak Ice GHC finishing.  
Drawers supplied with internal  
technology push-pull (blum®)











**ARMADIO art. 8271**  
Misure cm L. 150 P. 68 H. 230  
Armadio con ante scorrevoli in legno, struttura in finitura Ghiaccio GHC, con ante fianchi e top in rovere finitura ghiaccio GHC.

*WARDROBE art. 8271*  
Dimensions cm. L. 150 D. 68 H. 230  
Wardrobe with wood sliding doors, structure in Ice GHC finishing with top, front doors and sides veneered in oak Ice GHC finishing.

**SEDIA art. 542**  
Misure cm L. 55 P. 63 H. 110  
Sedia con struttura in finitura Ghiaccio GHC e rivestimento in lana cod. 604

*CHAIR art. 542*  
Dimensions cm. L. 55 D. 63 H. 110  
Chair with structure in Ice GHC finishing and covering in wool cod. 604



CREDENZA art. 8259

Misure cm L. 164 P. 62 H. 88

Struttura in finitura Ghiaccio GHC, con top, ante e fianchi  
placcati rovere in finitura Ghiaccio GHC. Cassetti interni  
dotati di tecnologia spingi-apri (*blum*®).

*SIDEBOARD art. 8259*

*Dimensions cm L. 164 D. 62 H. 88*

*Structure in Ice GHC finishing, with top, front doors and sides  
veneered in oak Ice GHC finishing. Internal drawers supplied  
with push-pull technology (*blum*®)*

SEDIA art. 545

Misure cm L. 53 P. 54 H. 98

Sedia con struttura in finitura Ghiaccio GHC e rivestimento  
in velluto cod. 709

*CHAIR art. 545*

*Dimensions cm L. 53 D. 54 H. 98*

*Chair with structure in Ice GHC finishing and covering in  
velvet cod. 709*

TAVOLO ALLUNGABILE art. 648

Misure chiuso cm L. 180 P. 105 H. 77

Misure aperto cm L. 270 P. 105 H. 77

Tavolo allungabile con struttura in finitura Ghiaccio GHC e  
piano placcato rovere in finitura Ghiaccio GHC.

*EXTENDABLE TABLE art. 648*

*Dimensions closed cm L. 180 D. 105 H. 77*

*Dimensions open cm L. 270 D. 105 H. 77*

*Extendable table with structure in Ice GHC finishing and top  
veneered in oak Ice GHC finishing.*







*SEDIA art. 545*  
 Misure cm L. 53 P. 54 H. 98  
 Sedia con struttura in finitura Ghiaccio GHC e rivestimento in velluto cod. 709

*CHAIR art. 545*  
 Dimensions cm. L. 53 D. 54 H. 98  
 Chair with structure in Ice GHC finishing and covering in velvet cod. 709

*TAVOLO ALLUNGABILE art. 648*  
 Misure chiuso cm L. 180 P. 105 H. 77  
 Misure aperto cm L. 270 P. 105 H. 77  
 Tavolo allungabile con struttura in finitura Ghiaccio GHC e piano placcato rovere in finitura Ghiaccio GHC.

*EXTENDABLE TABLE art. 648*  
 Dimensions closed cm. L. 180 D. 105 H. 77  
 Dimensions open cm. L. 270 D. 105 H. 77  
 Extendable table with structure in Ice GHC finishing and top veneered in oak Ice GHC finishing.







CREDENZA art. 8259  
Misure cm L. 164 P. 62 H. 88  
Struttura in finitura Ghiaccio GHC, con top, ante e fianchi  
placcati rovere in finitura Ghiaccio GHC. Cassetti interni dotati di  
tecnologia spingi-apri (*blum*®).

*SIDEBOARD art. 8259*  
Dimensions cm L. 164 D. 62 H. 88  
Structure in Ice GHC finishing, with top, front doors and sides  
veneered in oak Ice GHC finishing. Internal drawers supplied with  
push-pull technology (*blum*®)







**LETTO art. 7750**  
Misure cm L. 220 P. 215 H. 160  
Rete/Materasso misure 180 x 200  
Testiera imbottita con rivestimento in lana cod. 601,  
giroletto sfoderabile e gambe in finitura Noce Caramello  
NCR.

*BED art. 7750*  
Dimensions cm L. 220 D. 215 H. 160  
Bedspring/Mattress dimensions 180 x 200  
Upholstered headboard with covering in wool cod. 601,  
removable upholstered bedframe and legs with Caramel  
walnut NCR finishing.

**COMO' art. 8266**  
Misure cm L. 142 P. 58 H. 107  
Struttura in finitura Noce Caramello NCR, con top, fianchi  
e cassetti placcati rovere in finitura Noce Caramello NCR.  
Cassetti sono dotati di tecnologia (blum®).

*CHEST ART. 8266*  
Dimensions cm. L. 142 D. 58 H. 107  
Structure in caramel walnut NCR finishing, with top,  
sides and drawers veneered in oak Caramel walnut NCR  
finishing. Drawers supplied with internal  
technology (blum®)

**COMODINO art. 8268**  
Misure cm L. 65 P. 43 H. 62  
Struttura in finitura Noce Caramello NCR, con top, fianchi  
e cassetti placcati rovere in finitura Noce Caramello NCR.  
Cassetti sono dotati di tecnologia (blum®).

*NIGHT STAND art. 8268*  
Dimensions cm L. 65 D. 43 H. 62  
Structure in caramel walnut NCR finishing, with top,  
sides and drawers veneered in oak Caramel walnut NCR  
finishing. Drawers supplied with internal  
technology (blum®)





**MOBILE CASSETTIERA art. 8270**  
 Misure cm L. 73 P. 47 H. 148  
 Struttura in Noce Caramello NCR, con top,  
 fianchi e cassetti placcati rovere in finitura  
 Noce Caramello NCR. Cassetti sono dotati di  
 tecnologia (blum®).

*CHEST OF DRAWERS art. 8270*  
 Dimensions cm L. 73 D. 47 H. 148  
 Structure in Caramel Walnut NCR, with top,  
 sides and drawers veneered in oak Caramel  
 Walnut finishing. Drawers supplied with  
 internal technology (blum®).



**COMODINO art. 8268**  
 Misure cm L. 65 P. 43 H. 62  
 Struttura in finitura Noce Caramello NCR, con  
 top, fianchi e cassetti placcati rovere in finitura  
 Noce Caramello NCR. Cassetti sono dotati di  
 tecnologia (blum®).

*NIGHT STAND art. 8268*  
 Dimensions cm L. 65 D. 43 H. 62  
 Structure in caramel walnut NCR finishing,  
 with top, sides and drawers veneered in oak  
 Caramel walnut NCR finishing. Drawers  
 supplied with internal technology (blum®).





chapter . 04

# Maison des Fleures

I see trees of green red roses too  
I see them bloom for me and for you  
And I think to myself  
what a wonderful world

I see skies of blue and clouds of white  
Bright blessed days dark sacred nights  
And I think to myself  
what a wonderful world

The colors of a rainbow, so pretty in the sky  
Are also on the faces of people going by  
I see friends shaking hands  
saying "how do you do?"

They're really saying I love you  
I hear babies cry, I watch them grow  
They'll learn much more than I'll never know

And I think to myself  
what a wonderful world  
Yes I think to myself  
what a wonderful world

....

*Louis Armstrong, What a wonderful world, 1967*











COMODINO art. 7641  
Misure cm L. 60 P. 43 H. 62  
Struttura in finitura Cenere CNR con  
parte centrale cassetti Fango Antico FAA  
Maniglie in fusione di ottone finitura  
argento antico cod.A

*NIGHT STAND art. 7641  
Dimensions cm. L. 60 D. 43 H. 62  
Structure in Cenere CNR finishing,  
with central part drawers in Antique  
Fango FAA finishing  
Cast brass handles silver colour  
Antique-like finish cod.A*



LETTO art. 7711.2  
Misure cm L. 240 P. 215 H. 140  
Rete/Materasso misure 180 x 200  
Cornice testiera e giroletto finitura Cenere CNR  
Testiera sfoderabile lavorazione liscia in tessuto  
Damascato cod. 404

*BED art. 7711.2  
Dimensions cm. L. 240 D. 215 H. 140  
Bedspring/Matress cm. 180 x 200  
Headboard frame and bedframe in Cenere CNR finishing  
Headboard covered with removable fabric Damascato  
cod. 404, with smooth manufacture.*









COMO' art. 7640  
Misure cm. L. 135 P. 56 H. 107  
Struttura in finitura  
Cenere CNR con parte  
centrale cassetti Fango Antico FAA  
Maniglie in fusione di ottone  
finitura argento cod.A

NIGHT STAND art. 7640  
Dimensions cm. L. 135 D. 56 H. 107  
Structure in Cenere CNR finishing,  
with central part drawers  
in Antique Fango FAA finishing  
Cast brass handles silver  
colour Antique-like finish cod.A







pag. sx

COMÒ art. 7640  
Misure cm L. 135 P. 56 H. 107  
Struttura in finitura Nero Seppia antico cod. NSA  
Maniglie, serratura, chiave e puntali in fusione di  
ottone finitura argento antico cod.A

*CHEST art. 7640  
Dimensions cm. L. 135 D. 56 H. 107  
Structure in Antique black Sepia cod. NSA  
Cast brass handles, lock, key and embellishments  
silver colour Antique-like finish cod.A*



COMÒ art. 7640  
Misure cm L. 135 P. 56 H. 107  
Struttura in finitura Cenere CNR con parte  
centrale cassetti Fango Antico FAA  
Maniglie in fusione di ottone  
finitura argento antico cod.A

*CHEST art. 7640  
Dimensions cm. L. 135 D. 56 H. 107  
Structure in Cenere CNR finishing,  
with central part drawers in Antique Fango FAA  
finishing, Cast brass handles silver  
colour Antique-like finish cod.A*

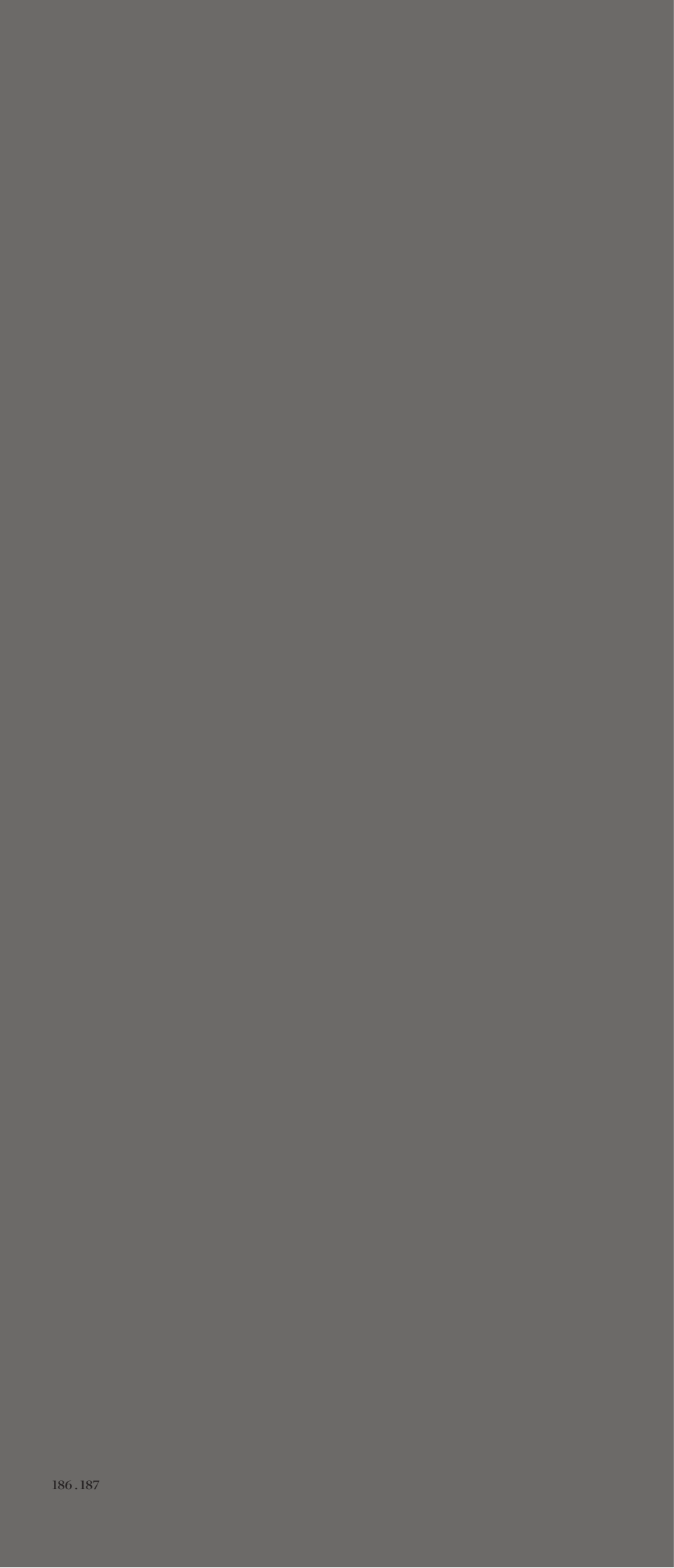




LETTO art. 7711.2  
Misure cm L. 240 P. 215 H. 140  
Rete/Materasso misure 180 x 200  
Cornice testiera e giroletto in finitura Antiquariato cod. LCA  
Testiera non sfoderabile lavorazione capitone cod. C in pelle cod. 104

*BED art. 7711.2  
Dimensions cm. L. 240 D. 215 H. 140  
Bedspring/Matress cm. 180 x 200  
Headboard/frame and bedframe  
with Antique Trade cod. LCA finishing  
Headboard covered with no-removable leather cod. 104,  
with capitonnè manufacture cod. C*









LETTO art. 7711.2  
Misure cm L. 240 P. 215 H. 140  
Rete/Materasso misure 180 x 200  
Cornice testiera e giroletto in finitura Burro Antico cod. BUA.  
Testiera sfoderabile lavorazione liscia cod.L in pelle collezione cod. 101

*BED art. 7711.2*  
*Dimensions cm. L. 240 D. 215 H. 140*  
*Bedspring /Matress cm. 180 x 200*  
*Headboard frame and bedframe with Antique Butter BUA finishing.*  
*Headboard covered with removable leather cod. 101, smooth manufacture cod. L*











COMODINO art. 7638  
Misure cm L. 65 P. 43 H. 65  
Struttura in finitura Burro Antico cod. BUA, top in finitura  
Miele Antico cod. CEA.  
Maniglie in fusione di ottone color argento antico cod. A

NIGHT STAND art. 7638  
Dimensions cm. L. 65 D. 43 H. 65  
Structure Antique butter cod. BUA, top Antique Honey cod.  
CEA. Cast brass handles,  
silver colour Antique-like finish cod.A

COMÒ art. 7637  
Misure cm L. 140 P. 55 H. 97  
Struttura in finitura Burro Antico cod. BUA, top in finitura  
Miele Antico cod. CEA.  
Maniglie in fusione di ottone color argento antico cod. A

CHEST art. 7637  
Dimensions cm. L. 140 D. 55 H. 97  
Structure Antique butter cod. BUA finish, top Antique Honey  
cod. CEA finish. Cast brass handles,  
silver colour Antique-like finish cod.A







LETTO art. 7711.1  
Misure cm L. 240 P. 215 H. 140  
Rete/Materasso misure 180 x 200  
Cornice testiera e gambe in finitura Burro Antico cod. BUA  
Testiera non foderabile lavorazione drappeggio cod. D, in tessuto collezione Bon Ton cod. M07.  
Giroletto sfoderabile tessuto collezione Bon Ton cod. M07.

*BED art. 7711.1  
Dimensions cm. L. 240 D. 215 H. 140  
Bedspring/Matress cm. 180 x 200  
Headboard frame and legs Antique butter cod. BUA finish  
Headboard covered with no-removable fabric Bon Ton collection cod.M07, with drapery manufacture cod. D  
Bedframe covered with removable fabric Bon Ton collection cod. M07.*





LETTO art. 7731.1  
Misure cm L. 210 P. 215 H. 155  
Rete/Materasso misure 180 x 200  
Cornice testiera e gambe in finitura color cemento cod. CMT  
Testiera sfoderabile lavorazione trapuntata cod. T, in tessuto  
collezione Bon Ton cod. M06.  
Giroletto sfoderabile tessuto collezione Bonton cod. M06.

*BED art. 7731.1  
Dimensions L. 210 D. 215 H. 155  
Bedspring/Matress cm. 180 x 200  
Headboard frame and legs concrete colour cod. CMT finish  
Headboard covered with removable fabric Bon Ton collection cod.  
M06, with quilted manufacture cod. T  
Bedframe covered with removable fabric Bon Ton collection cod. M06*







LETTO art. 7731.1  
Misure cm L. 210 P. 215 H. 155  
Rete/Materasso misure 180 x 200  
Cornice testiera e gambe in finitura color cemento  
cod. CMT  
Testiera non sfoderabile lavorazione trapuntata cod.  
T, in tessuto collezione Bon Ton cod. M06.  
Giroletto sfoderabile tessuto collezione Bon Ton cod.  
M06.

BED art. 7731.1  
Dimensions L. 210 D. 215 H. 155  
Bedspring/Matress cm. 180 x 200  
Headboard/frame and legs concrete colour  
cod. CMT finish  
Headboard covered with no-removable fabric Bon  
Ton collection cod. M06, with quilted manufacture  
cod. T. Bedframe covered with removable fabric Bon  
Ton collection cod. M06

COMODINO art. 7638  
Misure cm L. 65 P. 43 H. 65  
Struttura in finitura color cemento cod. CMT,  
top in finitura Miele Antico cod. CEA.  
Maniglie in fusione di ottone color argento antico  
cod. A

NIGHT STAND art. 7638  
Dimensions cm. L. 65 D. 43 H. 65  
Structure concrete colour cod. CMT finish, top  
Antique Honey cod. CEA. Cast brass handles, silver  
colour Antique-like finish cod. A

POLTRONA art. 585  
Misure cm L. 70 P. 78 H. 104  
Finitura color cemento cod. CMT  
Rivestimento non sfoderabile in pelle cod. 101 con  
borchie color argento antico cod. A

ARMCHAIR art. 585  
Dimensions cm L. 70 D. 78 H. 104  
Patina concrete colour cod. CMT  
Covered with no-removable leather cod. 101  
Upholsterer's nails silver colour Antique-like finish  
cod. A





COMODINO art. 7638  
Misure cm L. 65 P. 43 H. 65  
Struttura in finitura color cemento  
cod. CMT,  
top in finitura Miele Antico cod. CEA.  
Maniglie in fusione di ottone color  
argento antico cod. A

*NIGHT STAND art. 7638  
Dimensions cm. L. 65 D. 43 H. 65  
Structure concrete colour cod. CMT  
finish, top Antique Honey cod. CEA.  
Cast brass handles, silver colour  
Antique-like finish cod.A*







POLTRONA art. 585  
Misure cm L. 70 P. 78 H. 104  
Finitura color cemento cod. CMT  
Rivestimento non sfoderabile in pelle cod. 101 con borchie  
color argento antico cod. A

*ARMCHAIR art. 585  
Dimensions cm L. 70 D. 78 H. 104  
Patina concrete colour cod. CMT  
Covered with no-removable leather cod. 101 Upholsterer's  
nails silver colour Antique-like finish cod. A*









COMODINO art. 7641  
Misure cm L. 60 P. 43 H 62  
Struttura in finitura color azzurro Zucchero antico cod. AZA  
Top in finitura Miele Antico cod. CEA  
Maniglie in fusione di ottone finitura argento antico cod.A

NIGHT STAND art. 7641  
Dimensions cm. L. 60 D. 43 H. 62  
Structure Antique Sugar cod. AZA finishing  
Top top Antique Honey cod. CEA finish.  
Cast brass handles silver colour Antique-like finish cod.A

LETTO art. 7729.1  
Misure cm L. 150 P. 215 H. 155  
Rete/Materasso misure 120 x 200  
Cornice testiera e gambe in  
finitura color Burro Antico cod. BUA  
Testiera non sfoderabile lavorazione trapuntata  
cod. T in pelle cod. 101  
Giroletto sfoderabile in pelle collezione cod. 101

BED art. 7729.1  
Dimensions L. 150 D. 215 H. 155  
Bedspring/Matress cm. 120 x 200  
Headboard frame and legs patina antique-butter colour cod.  
BUA finish  
Headboard covered with removable leather cod. 101, with  
quilted manufacture cod. T  
Bedframe covered with removable leather cod. 101







COMODINO art. 7641  
Misure cm L. 60 P. 43 H 62  
Struttura in finitura color azzurro  
Zucchero antico cod. AZA  
Top in finitura Miele Antico cod. CEA  
Maniglie in fusione di ottone finitura  
argento antico cod. A

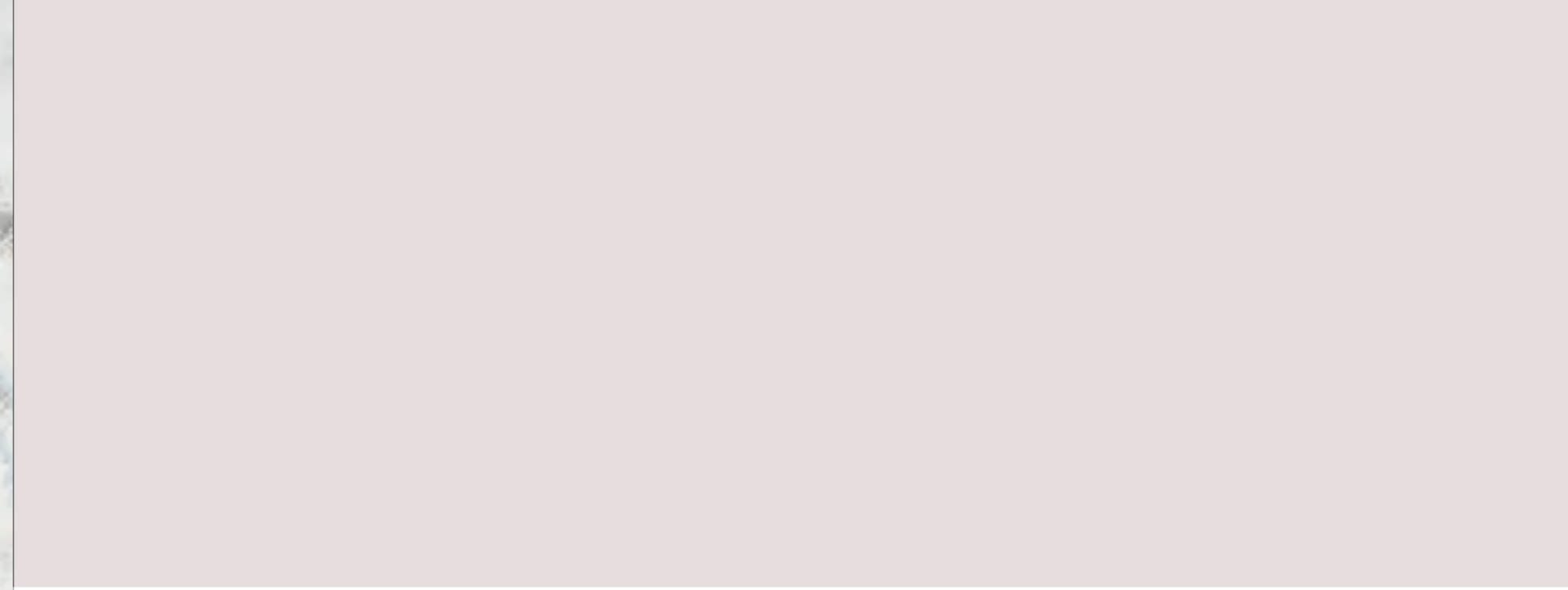
*NIGHT STAND art. 7641  
Dimensions cm. L. 60 D. 43 H. 62  
Structure Antique Sugar cod. AZA  
finishing  
Top top Antique Honey cod. CEA finishing.  
Cast brass handles silver colour Antique-  
like finish cod. A*











LETTO art. 7731.1  
Misure cm L. 210 P. 215 H. 155  
Rete/materasso misure 180 x 200  
Cornice testiera e gambe in finitura Miele Antico cod. CEA  
Testiera non sfoderabile lavorazione trapuntata cod. T in tessuto collezione Voila cod. R10  
Giroletto sfoderabile tessuto collezione Voila cod. R10

*BED art. 7731.1  
Dimensions cm. L. 210 D. 215 H. 155  
Bedspring/Matress cm. 180 x 200  
Headboard frame and legs Antique Honey cod. CEA finishing.  
Headboard covered with no-removable fabric Voila collection cod. R10 with quilted manufacture cod. T  
Bedframe covered with removable fabric Voila collection cod. R10*

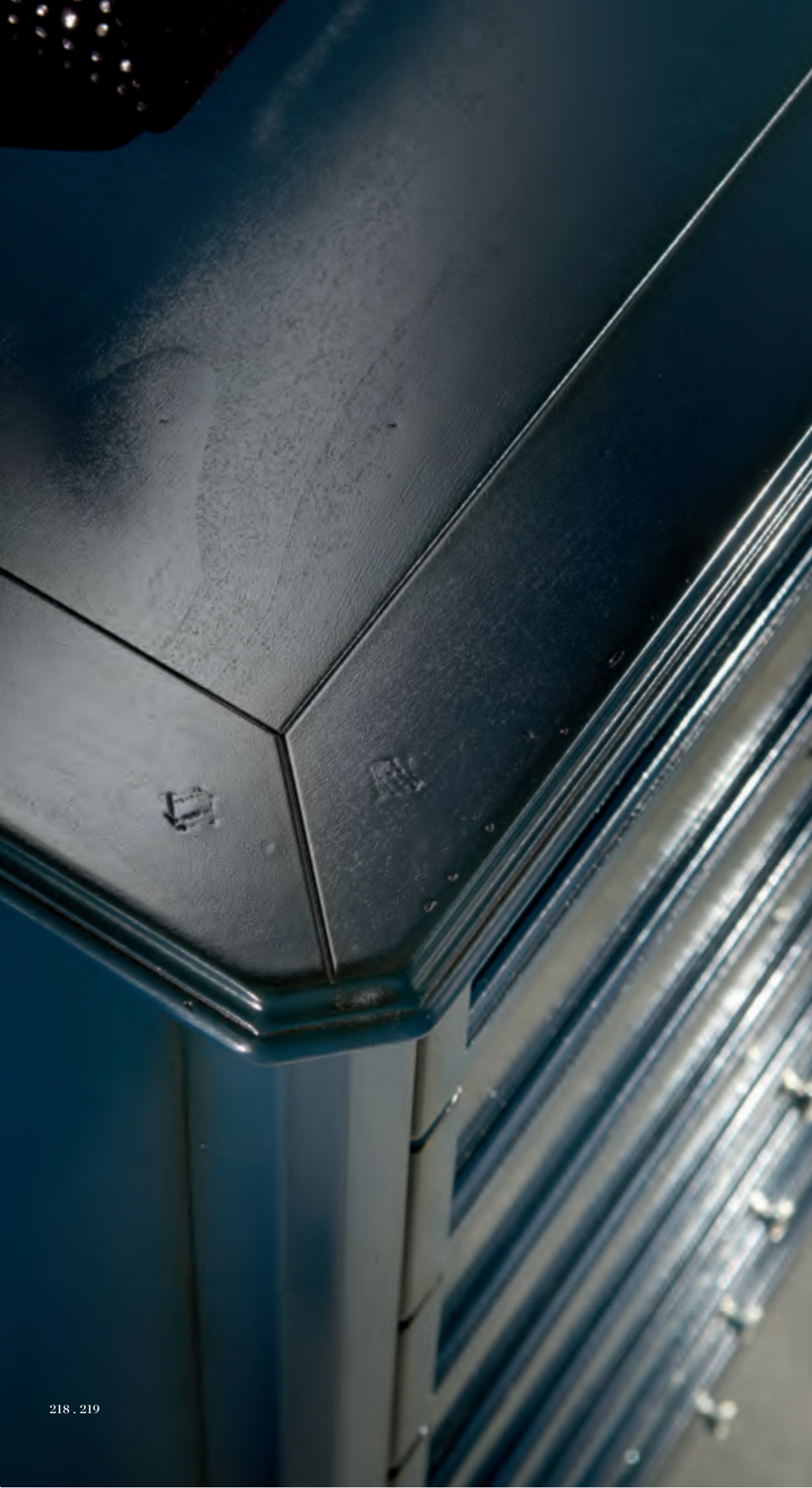




CASSETTIERA art. 8210  
Misure cm L. 75 P. 48 H. 130  
Cassettiera con struttura in finitura Creta Antico GCA e cassetti in  
finitura Burro Antico BUA. Accessori in metallo Argento antico

*CHEST OF DRAWERS art. 8210  
Dimensions cm. L. 75 D. 48 H. 130  
Chest drawers with structure in Antique Clay GCA finishing and  
drawers in Butter Antique BUA finishing  
Antique silver metal accessories*





CASSETTIERA art. 8211  
Misure cm L. 70 P. 40 H. 120  
Cassettiera con struttura in finitura  
Prussia Antico BLA, con frontali cassetti in cristallo neutro.  
Accessori in metallo Argento antico

*CHEST of DRAWERS art. 8211  
Dimensions cm. L. 70 D. 40 H. 120  
Chest drawers with structure in Antique Prussian BLA  
finishing, with doors frontal parts in neutral crystal glass.  
Antique silver metal accessories.*







VETRINETTA art. 8212  
Misure cm L. 68 P. 38 H. 140  
Vetrinetta con struttura in finitura Cina Antico RRA, e cristallo neutro. Accessori in metallo Argento antico.

*LITTLE CUPBOARD art. 8212  
Dimensions cm. L 68 D. 38 H. 140  
Little cupboard with structure in Antique Red RRA finishing, and neutral crystal glass. Antique silver metal accessories.*







CASSETTIERA art. 8213  
Misure cm L. 90 P. 52 H. 130  
Cassettiera con struttura in finitura Nero  
Seppia Antico NSA. Accessori in metallo  
Argento antico e pomoli con Swarovski.

CHEST OF DRAWERS art. 8213  
Dimensions cm. L. 90 D. 52 H. 130  
Chest drawers with structure in Antique Black  
Seppia NSA finishing,  
Antique silver metal accessories  
and knobs with Swarovski

SPECCHIO art. 6168 O  
Misure cm Ø 68  
Cornice in foglia oro e specchio bisellato.

MIRROR art. 6168 O  
Dimensions cm Ø 68  
Golden leaf frame and bevelled mirror







CASSETTIERA art. 8213  
Misure cm L. 90 P. 52 H. 130  
Cassettiera con struttura in finitura Nero  
Seppia Antico NSA. Accessori in metallo  
Argento antico e pomoli con Swarovski.

*CHEST OF DRAWERS art.8213  
Dimensions cm. L. 90 D. 52 H. 130  
Chest drawers with structure in Antique  
Black Seppia NSA finishing,  
Antique silver metal accessories  
and knobs with Swarovski*

SPECCHIO art. 6168 O  
Misure cm Ø 68  
Cornice in foglia oro e specchio bisellato.

*MIRROR art. 6168 O  
Dimensions cm Ø 68  
Golden leaf frame and bevelled mirror*

POLTRONA art. 586  
Misure cm L. 70 P. 78 H. 104  
Struttura in finitura Crema Antico CTA e  
rivestimento in pelle cod. 105

*ARMCHAIR art. 586  
Dimensions cm. L. 70 D. 78 H. 104  
Structure in Antique Cream CTA finishing  
and covering in leather cod. 105*







COMONCINO cod. 7639  
Misure L. 105 P. 50 H. 80  
Finitura Cemento cod. CMT  
Top in finitura Antiquariato cod. LCA  
Maniglie, serrature e chiave  
in fusione di ottone color argento antico cod. A

*SMALL CHEST cod. 7639  
Dimensions L. 105 D. 50 H. 80  
Structure Concrete cod. CMT finishing  
Top Antique Trade LCA finishing  
Cast brass handles, lock, key silver colour, Antique-like finish cod. A*







MOBILE TOILETTE cod. 7650  
 Misure L. 140 P. 67 H. 139  
 Finitura struttura Spiga cod. SPI  
 con profilo top e decori in Argento  
 Accessori in metallo Argento antico e pomoli  
 con Swarovski.

*SMALL CHEST cod. 7650  
 Dimensions L. 140 D. 67 H. 139  
 Structure Spiga cod. SPI finishing  
 Top profile and decorations in Silver  
 Antique silver metal accessories and knobs with  
 Swarovski*

POUFF art. 544  
 Misure cm L. 55 P. 45 H. 50  
 Struttura in finitura Spiga cod. SPI con  
 rivestimento in Ciniglia cod. 504

*POUFF art. 544  
 Dimensions cm L. 55 D. 45 H. 50  
 Structure with Spiga cod. SPI finishing and  
 covering in Ciniglia cod. 504*

LAMPADA art. 413  
 Misure cm L. 27 P. 13 H. 32  
 Base in ceramica in finitura Foglia Oro lucida  
 e bianco, paralume bianco con profili in velluto  
 vaniglia

*LAMP art. 413  
 Dimensions cm L. 27 D. 13 H. 32  
 Ceramic base gold leaf finish glossy and white,  
 white shade with profiles in velvet vanilla*

LAMPADA art. 412  
 Misure cm L. 40 P. 25 H. 44  
 Base in ceramica in finitura Foglia Oro lucida  
 e bianco, paralume bianco con profili in velluto  
 vaniglia

*LAMP art. 412  
 Dimensions cm L. 40 D. 25 H. 44  
 Ceramic base gold leaf finish glossy and white,  
 white shade with profiles in velvet vanilla*

TAVOLINO cod. 2635  
 Misure L. 60 P. 60 H. 72  
 Struttura laccata in finitura Perla Lucido PRL  
 Finitura del piano Spiga cod. SPI

*LOW TABLE cod. 2635  
 Dimensions L. 60 D. 60 H. 72  
 Structure in Gloss Pearl PRL finishing  
 Top Spiga cod. SPI finishing*

POLTRONA art. 597 /C  
 Misure cm L. 64 P. 72 H. 78  
 Struttura in finitura Perla Lucido PRL e  
 rivestimento in Ciniglia cod. 501 e cuscino in  
 Damasco cod. 401

*ARMCHAIR art. 597 /C  
 Dimensions cm. L. 64 D. 72 H. 78  
 Structure in Gloss Pearl PRL finishing and  
 covering in Ciniglia cod. 501 and cushion  
 covered in Damasco cod. 401*





POLTRONA art. 597 /C  
 Misure cm L. 64 P. 72 H. 78  
 Struttura in finitura Perla Lucido PRL e  
 rivestimento in Ciniglia cod. 501 e cuscino in  
 Damasco cod. 401

*ARMCHAIR art. 597/C*  
*Dimensions cm. L. 64 D. 72 H. 78*  
*Structure in Gloss Pearl PRL finishing and*  
*covering in Ciniglia cod. 501 and cushion*  
*covered in Damasco cod. 401*

TAVOLINO cod. 2636  
 Misure Ø 60 H. 70  
 Struttura laccata in finitura Perla Lucido PRL.  
 Finitura del piano Spiga cod. SPI

*LOW TABLE cod. 2636*  
*Dimensions Ø 60 H. 70*  
*Structure in Gloss Pearl PRL finishing*  
*Top Spiga cod. SPI finishing*

TAVOLINO cod. 2633  
 Misure L. 145 P. 90 H. 47  
 Struttura laccata in finitura Perla Lucido PRL  
 Finitura del piano Spiga cod. SPI

*LOW TABLE cod. 2633*  
*Dimensions L. 145 D. 90 H. 47*  
*Structure in Gloss Pearl PRL finishing*  
*Top Spiga cod. SPI finishing*

PORTA TV art. 8116  
 Misure cm L. 274 P. 38 H. 206  
 Struttura e schienale in finitura Spiga cod SPI e cornice in  
 finitura Perla Lucido PRL.  
 Accessori in metallo Oro antico e pomoli con Swarovski.

*TV STAND art. 8116*  
*Dimensions cm. L. 274 D. 38 H. 206*  
*Structure and back in Spiga cod. SPI finishing, frame in*  
*Pearl Gloss finishing PRL.*  
*metal antique accessories and knobs Gold with Swarovski.*





POLTRONA art. 597 /C  
Misure cm L. 64 P. 72 H. 78  
Struttura in finitura Perla Lucido PRL  
e rivestimento in Ciniglia cod. 501 e  
cuscino in Damasco cod. 401

ARMCHAIR art. 597/C  
Dimensions cm. L. 64 D. 72 H. 78  
Structure in Gloss Pearl PRL finishing  
and covering in Ciniglia cod. 501 and  
cushion covered in Damasco cod. 401

TAVOLINO cod. 2636  
Misure Ø 60 H. 70  
Struttura laccata in finitura  
Perla Lucido PRL  
Finitura del piano Spiga cod. SPI

LOW TABLE cod. 2636  
Dimensions Ø 60 H. 70  
Structure in Gloss Pearl PRL finishing  
Top Spiga cod. SPI finishing







TAVOLINO cod. 2635  
Misure L. 60 P. 60 H. 72  
Struttura laccata in finitura Perla Lucido PRL  
Finitura del piano Avorio Antico cod. AVA

LOW TABLE cod. 2635  
Dimensions L. 60 D. 60 H. 72  
Structure in Gloss Pearl PRL finishing  
Top Avorio Antico cod. AVA finishing

PORTA TV art. 8117  
Misure cm L. 200 P. 45 H. 54  
Struttura in finitura Spiga cod. SPI  
Piano in finitura Perla Opaco cod. PRO  
Accessori in metallo Oro antico.

TV STAND art. 8117  
Dimensions cm. L. 200 D. 45 H. 54  
Structure in Spiga cod. SPI finishing.  
Top in Matt Pearl cod. PRO.  
Metal antique accessories and knobs Gold.





PORTA TV art. 8116  
 Misure cm L. 274 P. 38 H. 206  
 Struttura e schienale in finitura Spiga cod SPI e cornice in finitura Perla Lucido PRL. Accessori in metallo Oro antico e pomoli con Swarovski.

TV STAND art. 8116  
 Dimensions cm. L. 274 D. 38 H. 206  
 Structure and back in Spiga cod. SPI finishing, frame in Pearl Gloss finishing PRL. metal antique accessories and knobs Gold with Swarovski.

PORTA TV art. 8117  
 Misure cm L. 200 P. 45 H. 54  
 Struttura in finitura Spiga cod. SPI Piano in finitura Perla Opaco cod. PRO Accessori in metallo Oro antico.

TV STAND art. 8117  
 Dimensions cm. L. 200 D. 45 H. 54  
 Structure in Spiga cod. SPI finishing. Top in Matt Pearl cod. PRO. Metal antique accessories and knobs Gold.

VETRINETTA art. 8214  
 Misure cm L. 100 P. 38 H. 130  
 Vetrinetta con struttura in finitura Perla Opaco cod. PRO, piano e schienale in finitura Spiga SPI con ante e fianchi in cristallo neutro. Accessori in metallo Argento antico

LITTLE CUPBOARD art. 8214  
 Dimensions cm. L. 100 D. 38 H. 130  
 Little cupboard with structure in Matt Pearl cod. PRO finishing, top and back in Spiga cod. SPI finishing and neutral crystal glass. Antique silver metal accessories







**VETRINETTA art. 8214**  
 Misure cm L. 100 P. 38 H. 130  
 Vetrinetta con struttura in finitura Perla  
 Opaco cod. PRO, piano e schienale in finitura  
 Spiga SPI con ante e fianchi in cristallo  
 neutro. Accessori in metallo Argento antico

**LITTLE CUPBOARD art. 8214**  
 Dimensions cm. L. 100 D. 38 H. 130  
 Little cupboard with structure in Matt Pearl  
 cod. PRO finishing, top and back in Spiga cod.  
 SPI finishing  
 and neutral crystal glass.  
 Antique silver metal accessories

**SCRIVANIA cod. 7651**  
 Misure L. 140 P. 67 H. 80  
 Finitura struttura e piano Spiga cod. SPI  
 con profilo top e decori in Argento  
 Accessori e pomoli in metallo Oro antico.

**DESK cod. 7651**  
 Dimensions L. 140 D. 67 H. 80  
 Structure and top Spiga cod. SPI finishing  
 Top profile and decorations in Silver  
 Antique gold metal accessories and knobs

**POLTRONCINA art. 541**  
 Misure cm L. 66 P. 63 H. 87  
 Poltroncina con struttura in finitura  
 Perla Lucido PRL, rivestimento in  
 velluto cod. 701

**LITTLE ARMCHAIR art. 541**  
 Dimensions cm L. 66 D. 63 H. 87  
 Little armchair with Gloss Pearl PRL  
 finishing structure and covering in  
 velluto cod. 701





TAVOLINO cod. 2635  
Misure L. 60 P. 60 H. 72  
Struttura e piano in finitura Burro cod. BUA  
Puntali in fusione di ottone finitura argento  
antico cod. A

*LOW TABLE cod. 2635  
Dimensions L. 60 D. 60 H. 72  
Structure and top in Burro cod. BUA finishing  
Cast brass embellishments silver colour antique-  
like finish cod. A*

POLTRONCINA art. 587 DB  
Misure cm L. 72 P. 88 H. 74  
Poltrona rivestita in pelle cod. 109

*ARMCHAIR art. 587 DB  
Dimensions cm. L. 72 D. 88 H. 74  
Armchair covered in leather cod. 109*







TAVOLINO cod. 2634  
Misure L. 90 P. 90 H. 47  
Struttura laccata in finitura Burro cod. BUA  
Finitura del piano Castagna cod. RCS  
Puntali in fusione di ottone finitura argento  
antico cod. A

*LOW TABLE cod. 2634  
Dimensions L. 90 D. 90 H. 47  
Structure in Burro cod. BUA finishing  
Top Castagna cod. RCS finishing  
Cast brass embellishments silver colour  
antique-like finish cod. A*





POLTRONCINA art. 587 DB  
Misure cm L. 72 P. 88 H. 74  
Poltrona rivestita in pelle cod. 109

ARMCHAIR art. 587 DB  
Dimensions cm. L. 72 D. 88 H. 74  
Armchair covered in leather cod. 109







VETRINA art. 8182  
Misure L. 127 P. 46 H. 190  
Struttura in finitura Creta Antico cod GCA  
Schiena rovere in finitura Miele Antico  
cod. CEA  
Serratura in fusione di ottone color  
argento antico cod. A

CUPBOARD art. 8182  
Dimensions cm L. 127 D. 46 H. 190  
Structure Antique Clay cod. GCA finishing  
Back panel oak Antique Honey cod. CEA  
finishing.  
Cast brass lock silver colour Antique-like  
finish cod. A







VETRINA art. 8182  
Misure L. 127 P. 46 H. 190  
Struttura in finitura Antiquariato cod. LCA  
Schiena rovere in finitura  
Miele Antico cod. CEA  
Serratura in fusione di ottone color  
argento antico cod. A

CUPBOARD art. 8182  
Dimensions cm L. 127 D. 46 H. 190  
Structure Antique Trade  
cod. LCA finishing  
Back panel oak Antique  
Honey cod. CEA finishing.  
Cast brass lock silver colour Antique-like  
finish cod. A







MADIA art. 8181  
Misure cm. L. 210 P. 55 H. 97  
Struttura in finitura Miele Antico cod. CEA  
Top in finitura Miele Antico cod. CEA  
Serrature in fusione di ottone finitura argento antico cod. A

*SIDEBOARD art. 8181*  
Dimensions cm. L. 210 D. 55 H. 97  
Structure Antique Honey cod. CEA finishing  
Top Antique Honey cod. CEA finishing  
Cast brass lock silver colour antique-like finish cod. A





TAVOLO ALLUNGABILE art. 650  
Misure chiuso cm L. 160 P. 110 H. 78  
Misure aperto cm L. 210 P. 110 H. 78  
Tavolo allungabile con struttura in finitura  
Crema Antico CTA e piano placcato rovere in  
finitura Crema Antico CTA

*EXTENDABLE TABLE art. 650  
Dimensions closed cm. cm L. 160 D. 110 H. 78  
Dimensions opened cm L. 210 D. 110 H. 78  
Extendable table with structure in Antique  
Cream CTA finishing and top veneered in oak  
Antique Cream CTA finishing*

SEDIA art. 535  
Misure cm L. 52 P. 58 H. 105  
Struttura in finitura Antiquariato LCA con  
rivestimento in similpelle vintage cod. 303

*CHAIR art. 535  
Dimensions cm L. 52 D. 58 H. 105  
Structure with Antique Trade LCA finishing  
and covering in leatherette Vintage cod. 303*

Maison des Fleures





TAVOLO ALLUNGABILE art. 650  
 Misure chiuso cm L. 160 P. 110 H. 78  
 Misure aperto cm L. 210 P. 110 H. 78  
 Tavolo allungabile con struttura in finitura  
 Crema Antico CTA e piano placcato rovere in  
 finitura Crema Antico CTA

*EXTENDABLE TABLE art. 650*  
*Dimensions closed cm. cm L. 160 D. 110 H. 78*  
*Dimensions opened cm L. 210 D. 110 H. 78*  
*Extendable table with structure in Antique*  
*Cream CTA finishing and top veneered in oak*  
*Antique Cream CTA finishing*

SEDIA art. 535  
 Misure cm L. 52 P. 58 H. 105  
 Struttura in finitura Antiquariato LCA con  
 rivestimento in similpelle vintage cod. 303

*CHAIR art. 535*  
*Dimensions cm L. 52 D. 58 H. 105*  
*Structure with Antique Trade LCA finishing*  
*and covering in leatherette Vintage cod. 303*





SEDIA art. 535  
Misure cm L. 52 P. 58 H. 105  
Struttura in finitura Miele Antico cod. CEA  
Rivestimento in tessuto Bon Ton cod. M01

CHAIR art. 535  
Dimensions cm L. 52 D. 58 H. 105  
Structure in Antique Honey cdo. CEA finishing.  
Covered with fabric Bon Ton cod. M01







SEDIA art. 537  
Misure L. 55 P. 67 H. 101

CHAIR art. 537  
Dimensioni L. 55 D. 67 H. 101





SCRIVANIA art. 6832  
Misure cm L. 160 P. 80 H. 80  
Struttura in Finitura azzurro Zucchero Antico cod. AZA  
Top rovere in finitura Miele Antico cod. CEA  
Maniglie, chiave e puntali in fusione di ottone  
color argento antico cod.A

*DESK art.6832*  
*Dimensions cm. L. 160 D. 80 H. 80*  
*Structure Antique Sugar cod. AZA finishing.*  
*Top oak Antique Honey cod. CEA finishing.*  
*Cast brass handles, key and embellishments silver*  
*colour Antique-like finish cod.A*







LIBRERIA art. 8193  
 Misure cm. L. 133 P. 30 H. 133  
 Cornice e schiena in finitura Miele Antico cod. CEA  
 Interno finitura Fango Antico cod. FAA

*HANGING BOOKCASE art. 8193*  
*Dimensions cm. 133 D. 30 H. 133*  
*Frame and back panel Antique Honey cod. CEA finishing.*  
*Inside in Antique Mud cod. FAA finishing.*









SCRIVANIA art. 6832  
Misure cm L. 160 P. 80 H. 80  
Struttura in Finitura Miele Antico cod. CEA  
Top rovere in finitura Miele Antico cod. CEA  
Maniglie, chiave e puntali in fusione di ottone  
color argento antico cod.A

*DESK art.6832*  
*Dimensions cm. L. 160 D. 80 H. 80*  
*Structure Antique Honey cod. CEA finishing.*  
*Top oak Antique Honey cod. CEA finishing.*  
*Cast brass handles, key and embellishments*  
*silver colour Antique-like finish cod.A*







SCRIVANIA art. 6831  
Misure cm L. 125 P. 70 H. 80  
Struttura in Finitura Fango Antico cod. FAA  
Top in finitura Antiquariato cod. LCA  
Maniglie, chiave e puntali in fusione di ottone  
color argento antico cod.A

*DESK art. 6831  
Dimensions cm. L. 125 D. 70 H. 80  
Structure in Antique Mud cod. FAA finishing.  
Top Antique Trade cod. LCA finishing.  
Cast brass handles, key and embellishments  
silver colour Antique-like finish cod.A*







CONSOLLE art. 7575  
Misure cm L. 135 P. 40 H. 80  
Struttura in Finitura Nero Seppia Antico cod. NSA  
Top in finitura Antiquariato cod. LCA  
Maniglie, chiave e puntali in fusione di ottone  
color ottone antico cod. O

*CONSOLLE TABLE art.7575  
Dimensions cm. L. 135 D. 40 H. 80  
Structure in Antique Black Seppia cod. NSA finishing.  
Top Antique Trade cod. LCA finishing.  
Cast brass handles, key and embellishments  
brass colour Antique-like finish cod. O*





CONSOLLE art. 7575  
Misure L. 135 P. 40 H. 80  
Struttura in finitura Burro Antico cod. BUA  
Top in rovere finitura Miele Antico cod. CEA  
Maniglia e puntali in fusione di ottone  
color Argento antico cod. A

*CONSOLE TABLE art. 7575  
Dimensions cm. L. 135 D. 40 H. 80  
Structure in Antique Butter cod. BUA  
Top oak Antique Honey cod. CEA finishing  
Cast brass handles and embellishments  
Silver colour Antique-like finish cod. A*







CONSOLLE art. 7576  
Misure cm. L180 P. 40 H. 80  
Struttura in finitura Prussia Antico BLA  
Top rovere finitura Miele Antico cod. CEA.  
Maniglie e puntali in fusione di ottone finitura  
argento antico cod. A

*CONSOLE TABLE art. 7576  
Dimensions cm. L180 D. 40 H. 80  
Structure Antique Prussian cod. BLA finishing  
Top oak Antique Honey cod. CEA finishing  
Cast brass handles and embellishments  
silver colour Antique-like finish cod.A*

SPECCHIERA art. 6195  
Misure cm L. 100 H. 100  
Cornice in finitura Prussia Antico BLA, profilo in finitura  
Miele Antico CEA e specchio neutro.

*MIRROR art. 6195  
Dimensions cm L. 100 H. 100  
Frame in Prussian Antique cod. BLA finishing, profile  
Antique Honey CEA finishing and neutral mirror*







CONSOLLE art. 7576  
Misure L. 180 P. 40 H. 80  
Struttura in finitura Crema Antico cod. CTA  
Top rovere finitura Antiquariato cod. LCA  
Maniglia e puntali in fusione di ottone antico cod. O

*CONSOLE TABLE art. 7576  
Dimensions cm. L. 180 D. 40 H. 80  
Structure in Antique Cream CTA finishing  
Top oak Antique Trade LCA finishing.  
Cast brass handle and embellishments brass colour Antique-like  
finish cod. O*



# Complements

I see trees of green red roses too  
I see them bloom for me and for you  
And I think to myself  
what a wonderful world

I see skies of blue and clouds of white  
Bright blessed days dark sacred nights  
And I think to myself  
what a wonderful world

The colors of a rainbow, so pretty in the sky  
Are also on the faces of people going by  
I see friends shaking hands  
saying "how do you do?"

They're really saying I love you  
I hear babies cry, I watch them grow  
They'll learn much more than I'll never know

And I think to myself  
what a wonderful world  
Yes I think to myself  
what a wonderful world

....

*Louis Armstrong, What a wonderful world, 1967*







SPECCHIERA art. 6192  
Misure cm L. 101 H. 186  
Cornice in finitura Perla Lucido PRL e specchio neutro.

*MIRROR art. 6192  
Dimensions cm L. 101 H. 186  
Frame in Gloss Pearl PRL finishing and neutral mirror*







SPECCHIERA art. 6193  
Misure cm L. 86 H. 106  
Cornice in finitura Ghiaccio GHC e  
specchio neutro.

*MIRROR art. 6193  
Dimensions cm L. 86 H. 106  
Frame in Ice GHC finishing and  
neutral mirror*



SPECCHIERA art. 6193  
Misure cm L. 86 H. 106  
Cornice in finitura Nero Seppia Antico NSA e  
specchio neutro.

*MIRROR art. 6193  
Dimensions cm L. 86 H. 106  
Frame in Antique Black Seppia NSA finishing  
and neutral mirror*







SPECCHIERA art. 6195  
Misure cm L. 100 H. 100  
Cornice in finitura Fango Antico FAA,  
profilo in finitura Miele Antico CEA e  
specchio neutro.

*MIRROR art. 6195  
Dimensions cm L. 100 H. 100  
Frame in Antique Mud FAA finishing,  
profile Antique Honey CEA finishing  
and neutral mirror*

SPECCHIERA art. 6191  
Misure cm L. 100 H. 100  
Cornice in finitura Dolomite Lucido  
DLL e specchio neutro.

*MIRROR art. 6191  
Dimensions cm L. 100 H. 100  
Frame in Gloss Dolomite DLL finishing  
and neutral mirror*

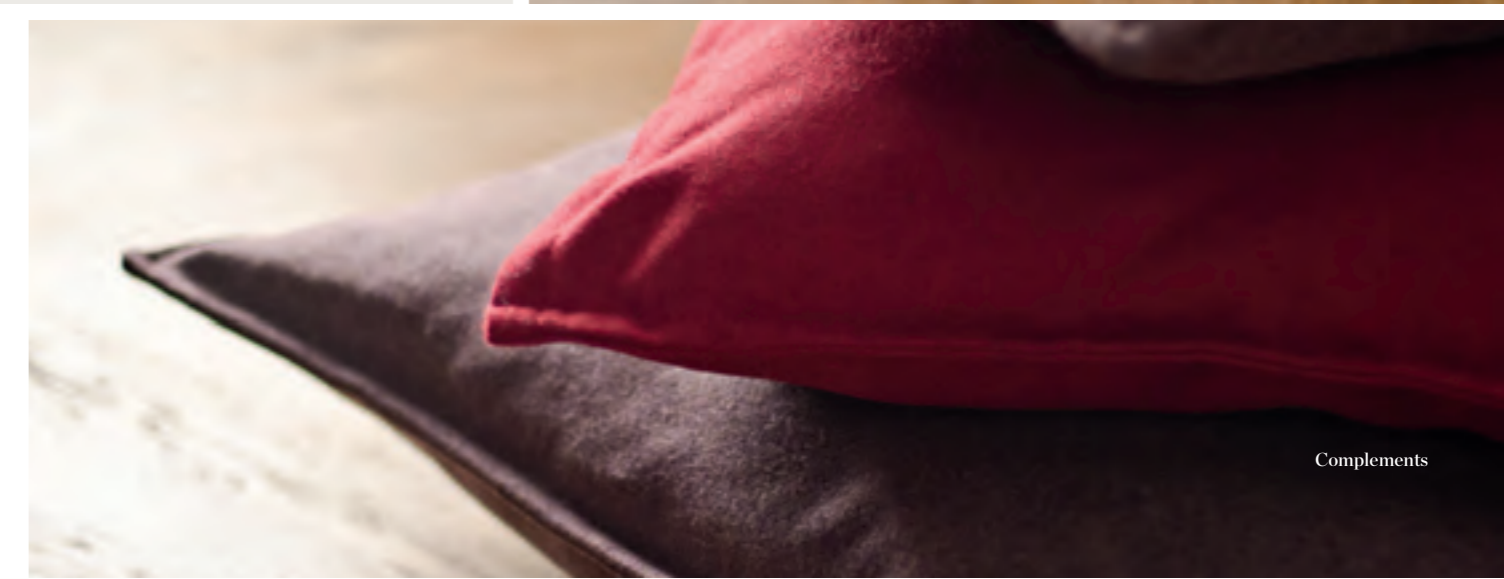






art. 430 - CUSCINO / CUSHION - Misure / Dimensions cm L. 64 P. 64 H. 17 -  
Finiture come da listino prezzi / Finishes: see pricelist for

art. 431 - CUSCINO / CUSHION - Misure / Dimensions cm L. 47 P. 47 H. 17 -  
Finiture come da listino prezzi / Finishes: see pricelist for







- art. 400 - SOSPENSIONE / *SUSPENSION* - Misure / *Dimensions* cm Ø 30 - Finiture come da listino prezzi / *Finishes: see pricelist for*
- art. 401 - SOSPENSIONE / *SUSPENSION* - Misure / *Dimensions* cm Ø 20 - Finiture come da listino prezzi / *Finishes: see pricelist for*
- art. 402 - SOSPENSIONE / *SUSPENSION* - Misure / *Dimensions* cm Ø 15 - Finiture come da listino prezzi / *Finishes: see pricelist for*
  
- art. 410 - LAMPADA DA TAVOLO / *TABLE LAMP* - Misure / *Dimensions* cm L. 45 P. 30 H. 55 - Finiture come da listino prezzi / *Finishes: see pricelist for*
- art. 411 - LAMPADA DA TAVOLO / *TABLE LAMP* - Misure / *Dimensions* cm L. 40 P. 25 H. 48 - Finiture come da listino prezzi / *Finishes: see pricelist for*
- art. 412 - LAMPADA DA TAVOLO / *TABLE LAMP* - Misure / *Dimensions* cm L. 40 P. 25 H. 43 - Finiture come da listino prezzi / *Finishes: see pricelist for*
- art. 412 - LAMPADA DA TAVOLO / *TABLE LAMP* - Misure / *Dimensions* cm L. 26 P. 13 H. 32 - Finiture come da listino prezzi / *Finishes: see pricelist for*
  
- art. 420 - SOPRAMMOBILE / *ORNAMENT* - Misure / *Dimensions* cm Ø 50 - Finiture come da listino prezzi / *Finishes: see pricelist for*
- art. 421 - SOPRAMMOBILE / *ORNAMENT* - Misure / *Dimensions* cm Ø 30 - Finiture come da listino prezzi / *Finishes: see pricelist for*
- art. 422 - SOPRAMMOBILE / *ORNAMENT* - Misure / *Dimensions* cm Ø 20 - Finiture come da listino prezzi / *Finishes: see pricelist for*



# Finishes





# Finiture, Finishes

Finiture con definizione "antico": colore base più patine, consumato, lavorazione manuale di anticatura: finti tarli, rovinii e crepe. Finiture senza effetto antico: colore base più patine, nessuna lavorazione manuale di anticatura, le imperfezioni naturali intrinseche del legno non possono essere motivo di contestazione. La finitura lucida si ottiene per sovrapposizione, come ultima lavorazione, di uno strato di vernice lucida su una superficie opaca.

Finishings defined 'antique': base colour plus coats, worn effect, manual antique-effect manufacturing: false-woodworms, fissures and cracks. Without antique-effect finishings: base colour plus coats, no manual antique-effect manufacturing, the natural imperfections of wood cannot constitute a reason for complaint. The gloss finishing is obtained as last manufacturing, by the overlapping of a gloss coat layer on a matt surface.

Отделка с указанием "antico": патинирование основного цвета, эффект изношенности, искусственное старение выполнено вручную, эффект шашеля и трещин. Отделка без эффекта старения: патинирование основного цвета без дополнительной обработки старения. Естественные несовершенства древесины не могут быть основанием для рекламации. Глянцевое покрытие достигается при помощи нанесения глянцевого лака, в качестве финальной обработки, на матовую поверхность. come ultima lavorazione, di uno strato di vernice lucida su una superficie opaca.



BUA\_BURRO ANTICO



AVA\_AVORIO ANTICO



LCA\_ANTIQUARIATO



SPI\_SPIGA



CTA\_CREMA ANTICO



GHC\_GHIACCIO



RCS\_CASTAGNA



CNR\_CENERE



CEA\_MIELE ANTICO



NOC\_NOCCIOLA



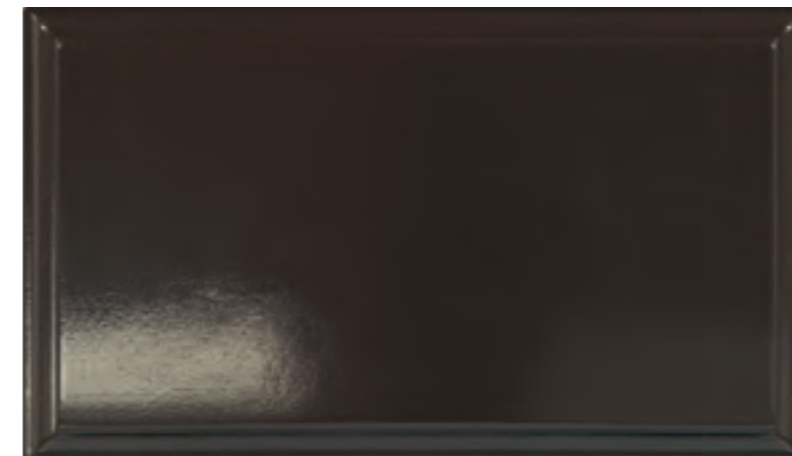
FAA\_FANGO ANTICO



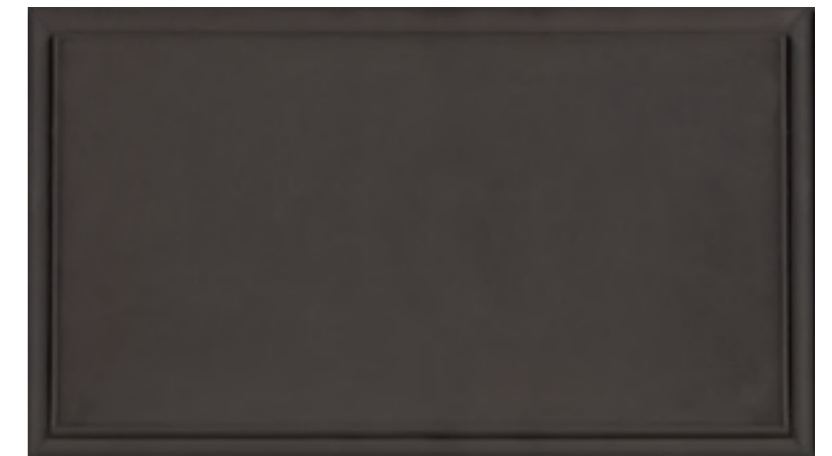
COG\_COGNAC ANTICO



NCR\_CARAMELLO



CCL\_CACAO LUCIDO



CCO\_CACAO OPACO





RRA\_CINA ANTICO



AZA\_ZUCCHERO ANTICO



DLL\_DOLOMITE LUCIDO



DLO\_DOLOMITE OPACO



BLA\_PRUSSIA ANTICO



GCA\_CRETA ANTICO



DLA\_DOLOMITE ANTICO



PRA\_PERLA ANTICO



NSA\_SEPPIA ANTICO



CMT\_CEMENTO



PRL\_PERLA LUCIDO



PRO\_PERLA OPACO



QRZ\_QUARZO



VOA\_OLIVA ANTICO



TRL\_TORTORA LUCIDO



TRO\_TORTORA OPACO

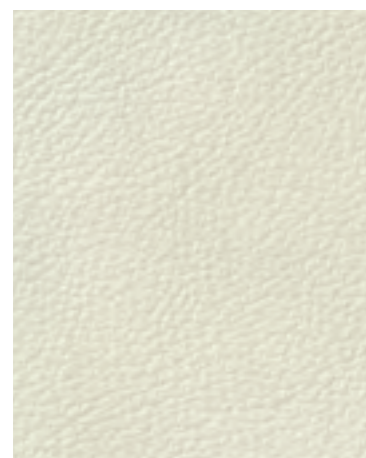


## Pelle, Leather

Pelle bovina, spessore 1,1 – 1,2 mm. I pellami provengono da allevamenti per scopi alimentari: i bovini sono tenuti in condizioni di cura e riguardo per assicurare loro una condizione di vita giusta con conseguente tutela della cute. Le pelli sono di origine Europea, sono idrorepellenti grazie ad uno specifico trattamento e quindi anche la loro manutenzione e pulizia risulta molto semplice: basta passare una spugna umida per rimuovere facilmente lo sporco. Il trattamento di concia è al cromo e la tintura è all'anilina passante con effetto semilucido ottenuto con una rifinitura con vernice all'acqua.

Bovine leather, thickness 1,1 – 1,2 mm. Leathers come from livestock with food-care attention: animals are kept in with great attention to assure proper living conditions. Leathers are of European origins; waterproof thanks to a specific treatment which allows also easy maintenance and cleaning: it is sufficient to use a wet sponge to remove the dirt. The tanning treatment is made with chromium and the tincture with aniline creating a semi-gloss effect, thanks also to a treatment with water-paint.

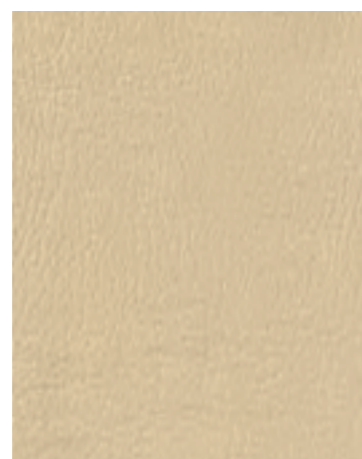
Коровья кожа, толщина 1,1 – 1,2 мм. Происхождение – животноводческие фермы для пищевых целей: крупный рогатый скот содержится в условиях ухода и хорошего обеспечения, как результат – защита кожи. Кожи европейского происхождения, водоотталкивающие благодаря специальной обработке, а следовательно и их эксплуатация и чистка являются очень простыми: загрязнения легко удаляются влажной губкой. Хромовое дубление кож, анилиновое окрашивание с полуглянцевым эффектом с дополнительным покрытием краской на водной основе



109\_Perla



101\_Burro



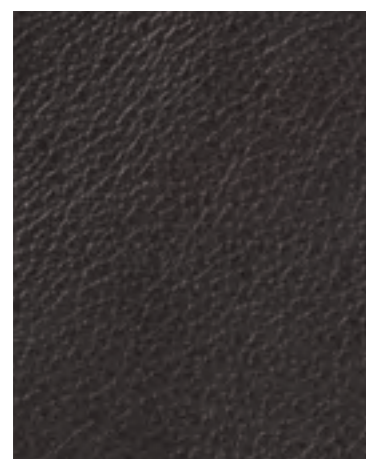
102\_Crema



103\_Tortora



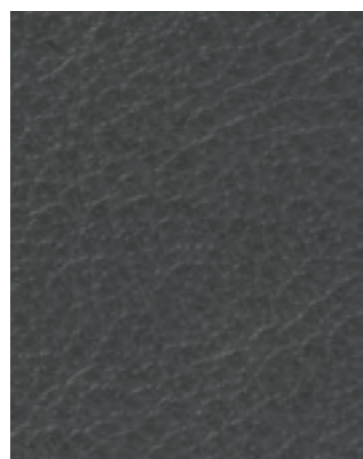
104\_Fango



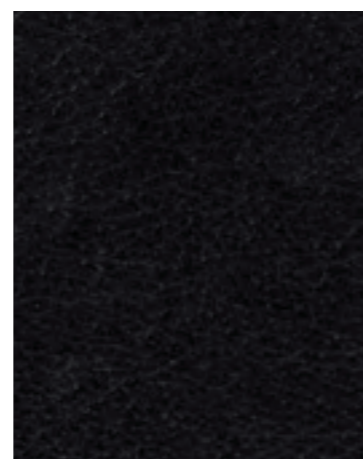
105\_Testa di Moro



106\_Grigio



107\_Antracite



108\_Nero

## Nabuk, Nabuk

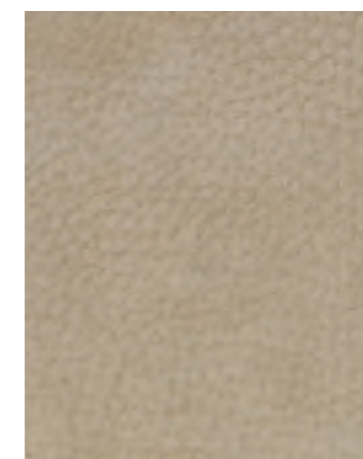
Pelle bovina di provenienza europea, spessore 1,3 mm, taglia media 6,0 mq. con aspetto esteriore pieno fiore, grana fine nabuccato. La concia è al cromo, la riconcia ai sali al cromo e tannini sintetici, tintura passante con coloranti acidi e premetalizzati. Quest'articolo di alta qualità e versatilità presenta una superficie con mano morbida e aspetto semiopaco, resistente ai liquidi a base oleosa e acquosa. Consigli per mantenere inalterata la qualità della pelle: evitare la luce diretta dal sole, evitare l'esposizione a fonti di calore, pulire regolarmente la pelle con un panno morbido ed asciutto.

Bovine leather of European origin, thickness 1,3 mm, medium size 6,0 mq, natural corrected grain, refined nabuk. The tanning treatment is made with chromium, the re-tanning with chromium salts and synthetic chromium elements, pass-through with acid and pre-metallic paints. This article has such a high quality and versatility that its surface is smooth and semi-matt when touched. It is waterproof, also to oily liquids. Suggestions to maintain unaltered the leather quality: avoid direct sun rays, keep away also from heat sources; clean regularly with a soft and dry cloth.

Коровья кожа европейского происхождения, толщина – 1,3 мм., средний размер 6,0 м2, наружный слой – pieno fiore, отшлифованная мелкозернистыми абразивами, что придает поверхности слегка шероховатый внешний вид. Хромовое дубление, додубливание с применением солей хрома и синтетических дубильных веществ, окраска кислотными металлокомплексными красителями. Продукт высокого качества и эксплуатации, мягкий на ощупь, матовый внешний вид. Не впитывает жидкости на водной основе или масла натурального происхождения. Рекомендации для сохранения качества кожи неизменным: избегать попадания прямых солнечных лучей, избегать расположения возле источников обогрева, регулярно чистить кожу мягкой и сухой тканью.сухой тканью.



201\_Sabbia



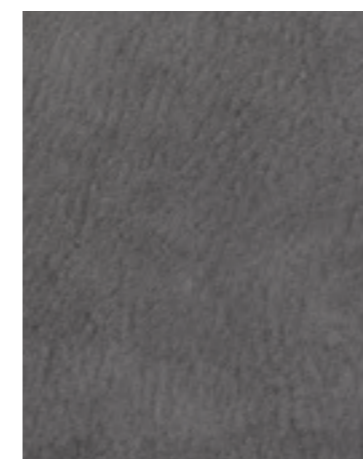
202\_Crema



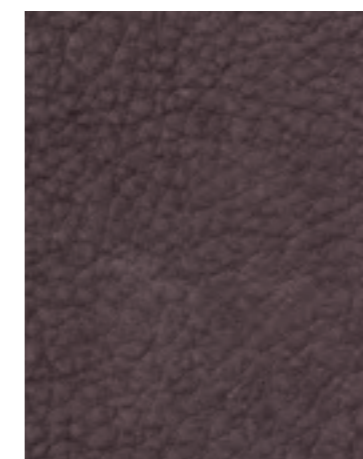
203\_Fango



204\_Testa di Moro



205\_Grigio



207\_Prugna



208\_Nero



## Vintage

Finta-pelle con spessore 1,2 – 1,3 mm rotoli in altezza cm. 138 – 140 resistenza all'abrasione 22.000 cicli, reazione al fuoco in classe 1IM. Consigli per la pulizia: pulire con un tessuto inumidito ed insaponato con detergente neutro. Non utilizzare prodotti aggressivi o abrasivi. Non utilizzare alcun tipo di candeggina, pulire delicatamente e risciacquare con acqua tiepida. In genere i colori chiari delle finte-pelli non possono essere messi a contatto con tessuti colorati non fissati (es. jeans e derivati) onde evitare macchie o aloni che non possono essere puliti.

Fake leather thickness 1,2 – 1,3 mm, rolls with cm. 138-140 height, with an abrasion resistance of 22.000 cycles, reaction to fire of 1IM class. Suggestions for the cleaning: clean with a wet cloth, with neutral soap too. Do not use aggressive chemical products or abrasive ones. Do not use bleach, clean softly and rinse with warm water. Normally fake leathers with light colours cannot get in touch with coloured fabrics not properly treated (such as jeans or other coloured articles) in order to avoid the appearance of stains or spots which cannot be cleaned then.

Искусственная кожа толщиной 1,2 – 1,3 мм., ширина рулона 138 – 140 см., устойчивость к истиранию 22.000 циклов, огнестойкость – класс 1IM. Рекомендации по чистке: чистить влажной тканью с мыльным нейтральным раствором, после чего протереть чистой влажной тканью. Не использовать агрессивные или абразивные моющие средства. Не использовать отбеливатель. Как правило светлые цвета искусственных кож не могут контактировать с цветными неустойчивыми тканями (например джинсами и производными) во избежание пятен и окрашивания, которые потом не могут быть очищены.



301\_Panna



302\_Sabbia



303\_Beige



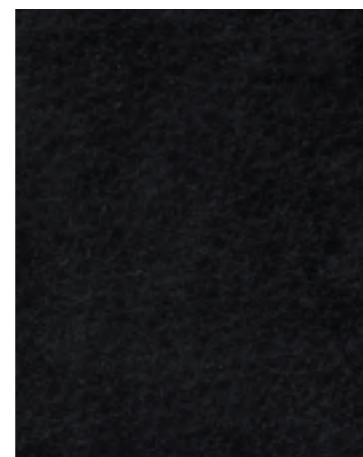
305\_Nocciola



304\_Grigio



306\_Fango



307\_Testa di Moro

## Damasco



401\_Burro



402\_Creta



403\_Tortora



404\_Perla

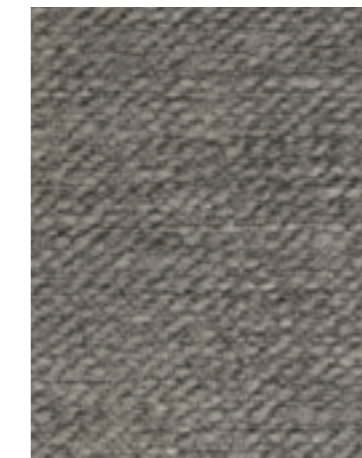
## Ciniglia



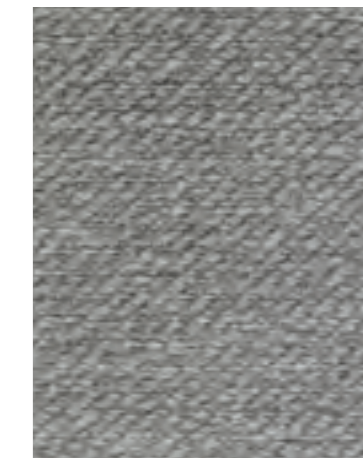
501\_Burro



502\_Creta

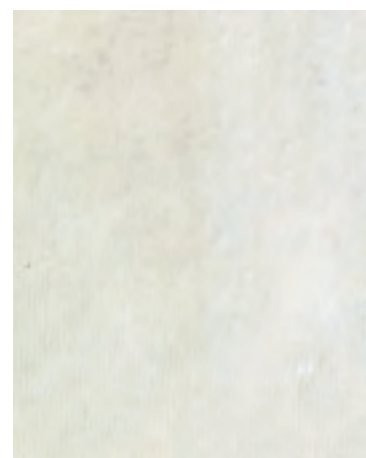


503\_Tortora



504\_Perla





701\_Panna



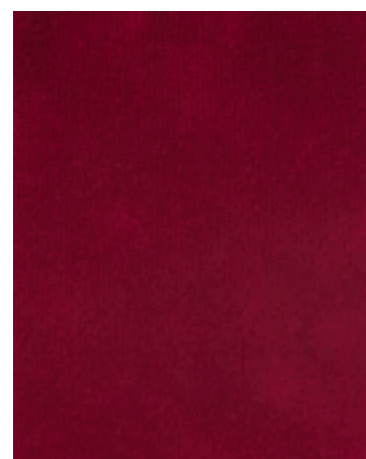
702\_Beige



703\_Perla



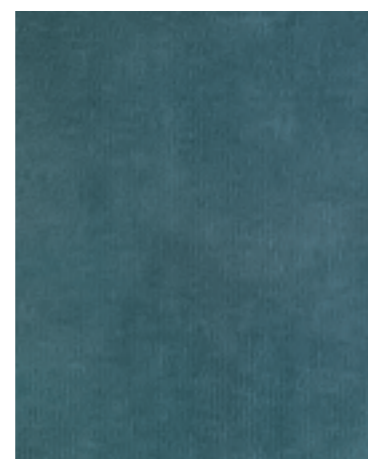
704\_Antracite



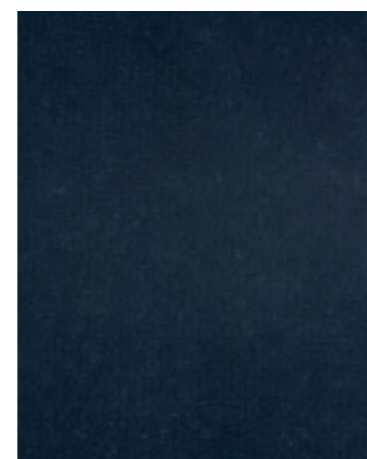
708\_Cardinale



706\_Rosa Antico



707\_Ottanio



709\_Oltremare



710\_Muschio



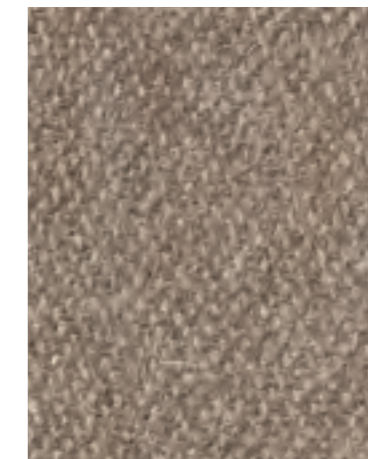
705\_Nero



601\_Panna



603\_Beige



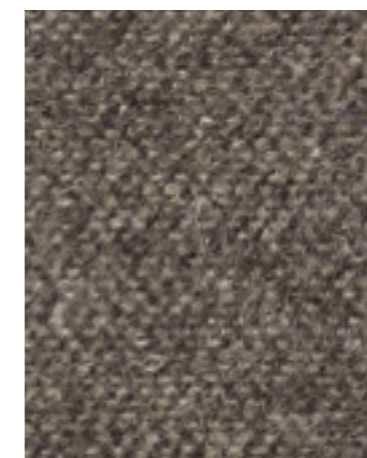
604\_Creta



605\_Tortora



606\_Nocciola



614\_Tabacco



623\_Muschio



613\_Mogano



615\_Confetto



616\_Malva



610\_Carminio



611\_Bordeaux



618\_Cielo



620\_Azzurro



622\_Oltremare





**Voilà** Raso, cotone poliammide / Satin, polyamide cotton. / Хлопок – полиамид



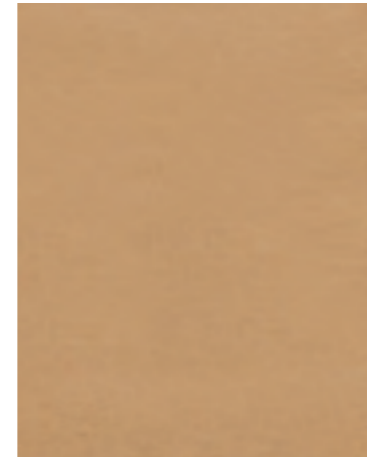
R01\_Burro



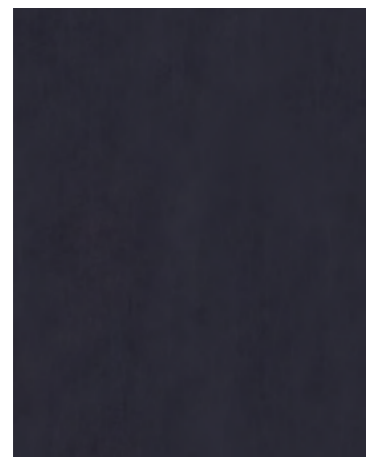
R07\_Rosa Antico



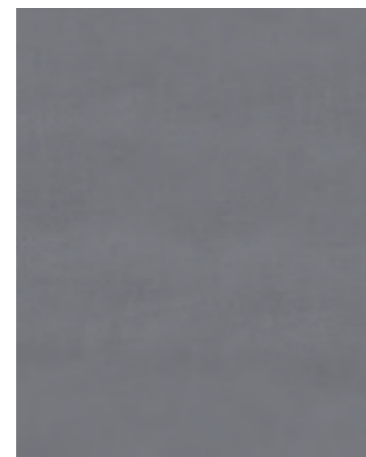
R03\_Rosso



R02\_Crema



R10\_Fumo



R06\_Carta Zucchero



R04\_Verde Salvia



R09\_Blu

**Bon Ton** Lino viscosa / Linen viscose / Лен - вискоза



M01\_Burro



M07\_Rosa Antico



M08\_Creta



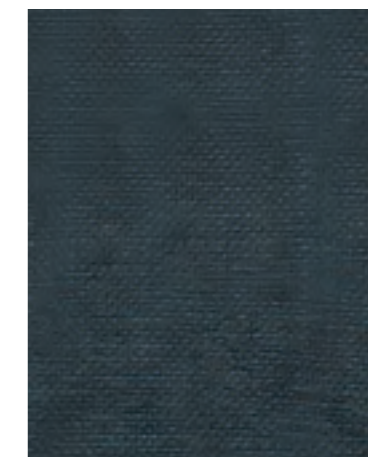
M02\_Crema



M10\_Fumo



M06\_Carta Zucchero



M05\_Muschio



M09\_Blu



# Abaco



pag. 04-05



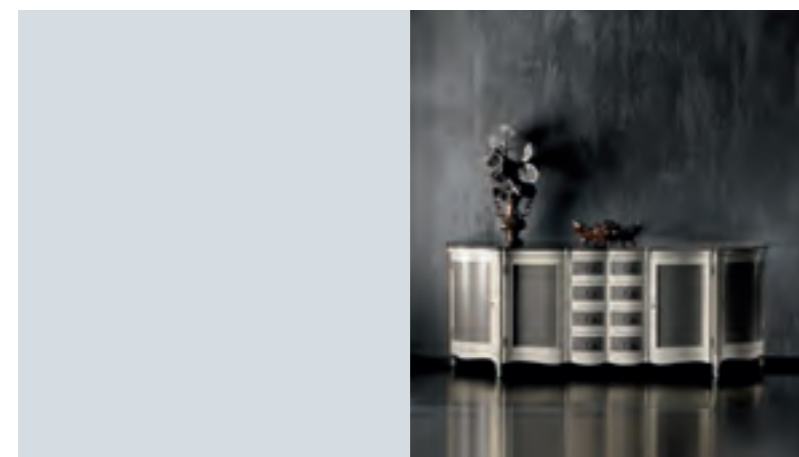
pag. 06-07



pag. 14-15



pag. 22-23



pag. 25



pag. 34-35



pag. 30-31



pag. 29



pag. 38-39



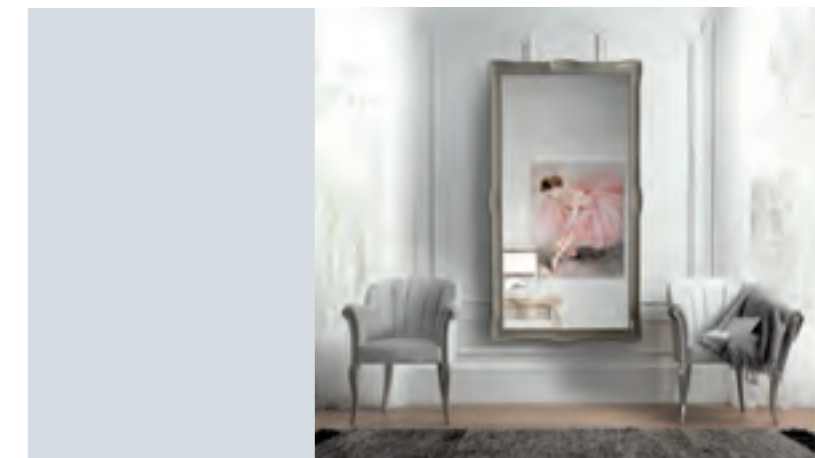
pag. 40-41



pag. 46-47



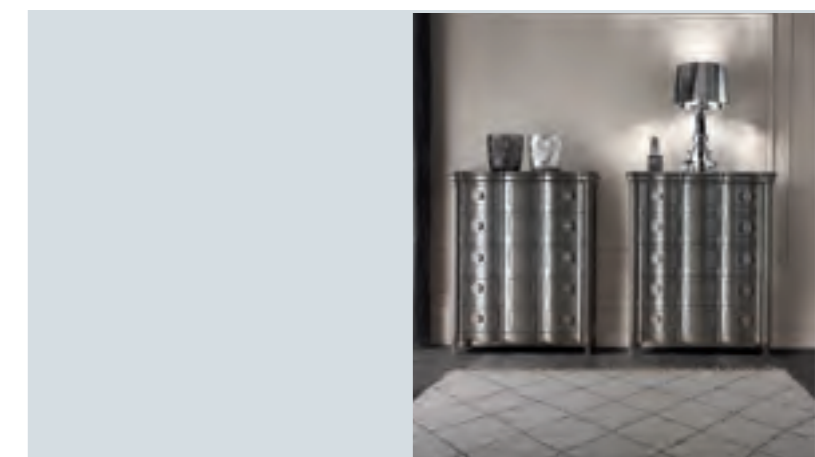
pag. 52-53



pag. 56-57



pag. 58-59



pag. 64-65

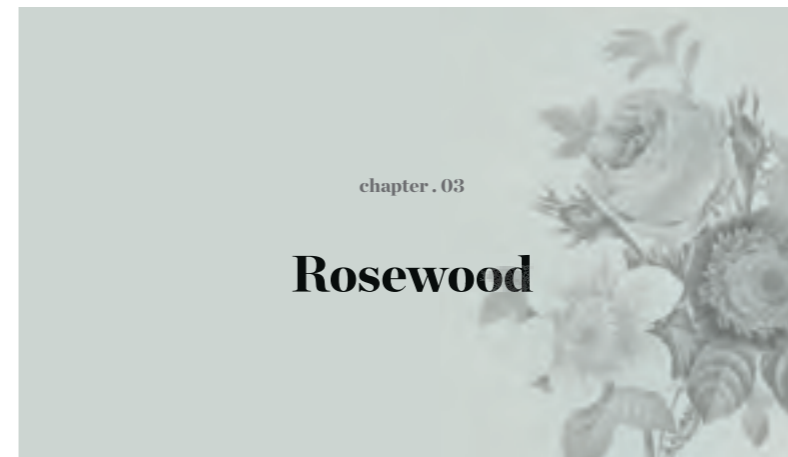




pag. 66-67



pag. 90-91



pag. 116-117



pag. 148-149



pag. 68-69



pag. 98-99



pag. 118-119



pag. 154-155



pag. 80-81



pag. 104-105



pag. 130-131



pag. 156-157



pag. 86-87



pag. 110-111



pag. 138-139



pag. 162-163





pag. 168-169



pag. 190-191



pag. 212-213



pag. 228-229



pag. 172-173



pag. 194-195



pag. 216



pag. 219



pag. 230-231



pag. 174-175



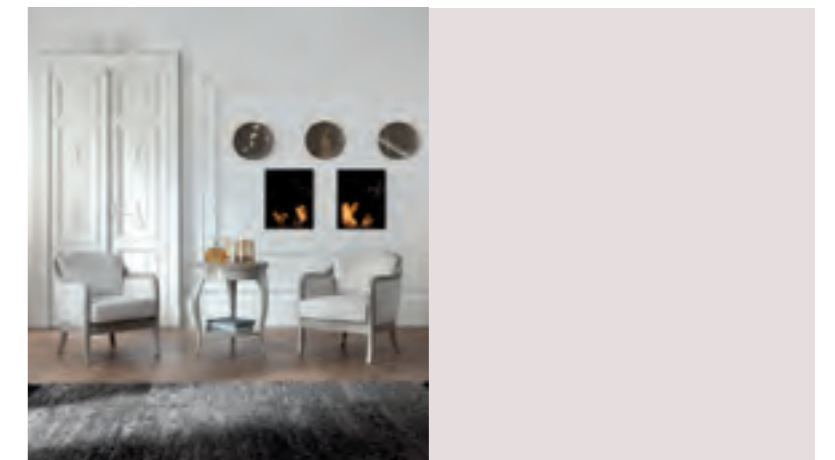
pag. 200-201



pag. 220



pag. 222



pag. 232



pag. 186-187



pag. 206-207

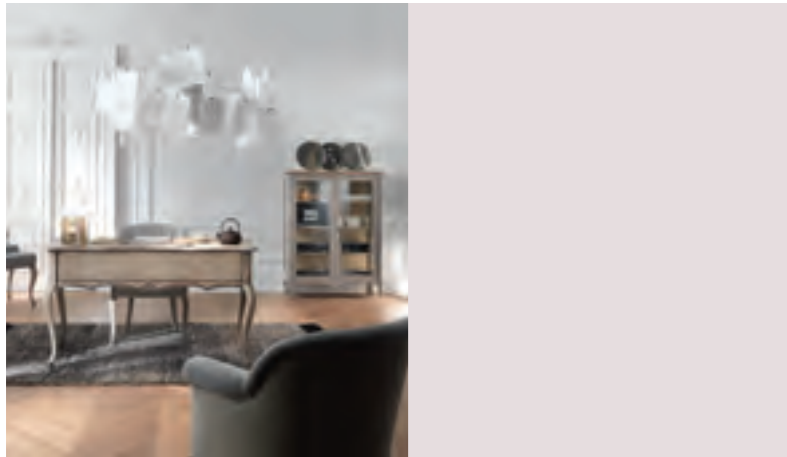


pag. 226-227



pag. 234-235





pag. 238



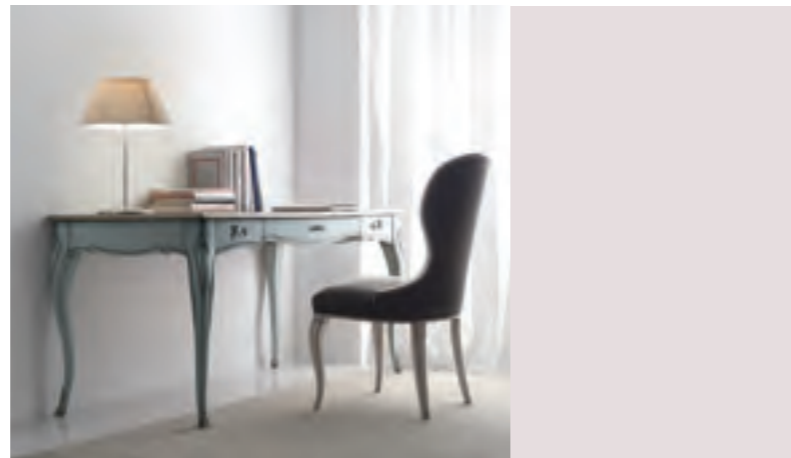
pag. 258-259



pag. 278-279



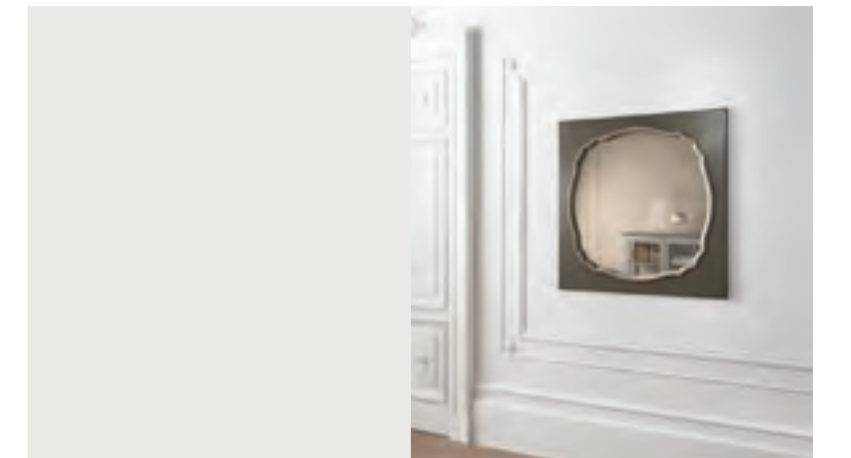
pag. 240-241



pag. 260



pag. 280



pag. 285

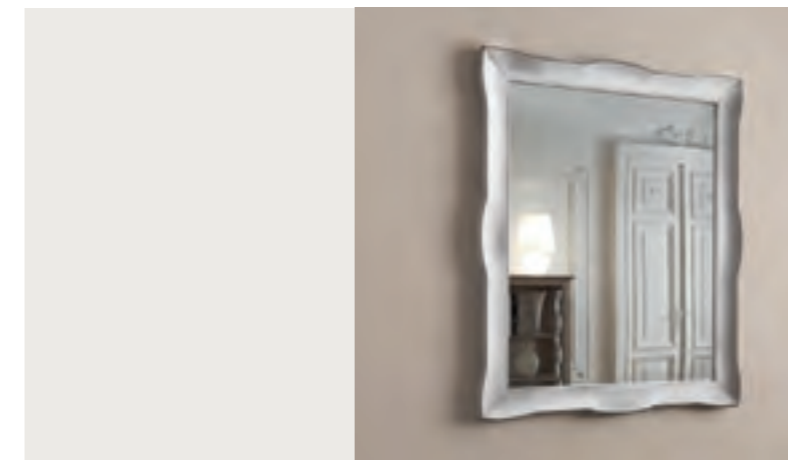


pag. 246

pag. 250



pag. 264-265



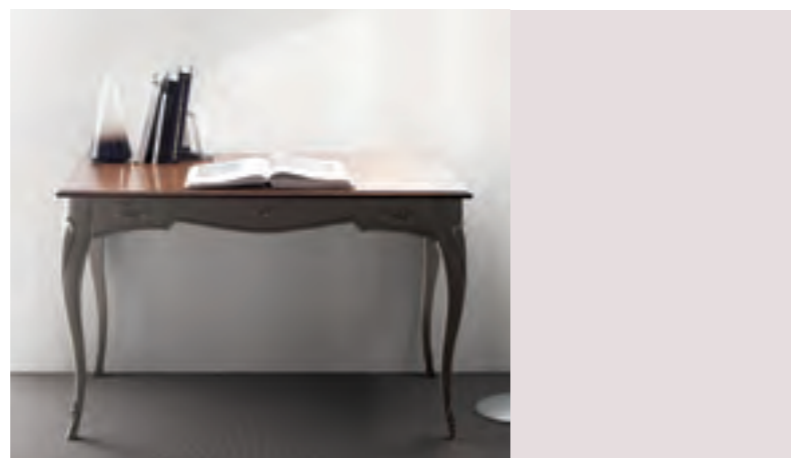
pag. 282



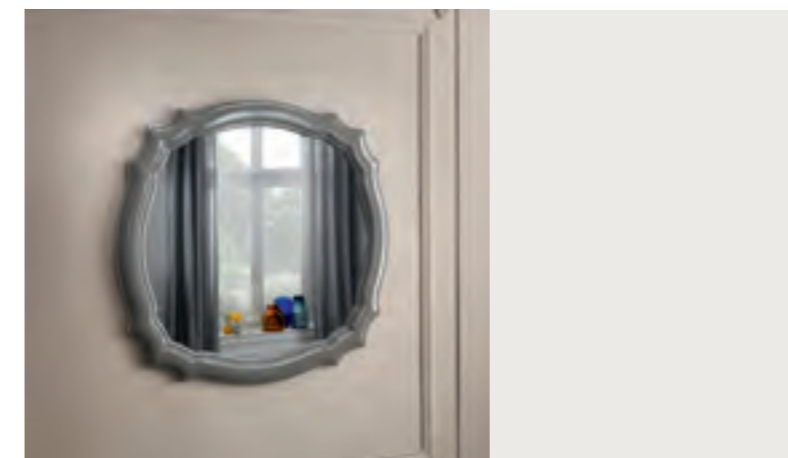
pag. 286



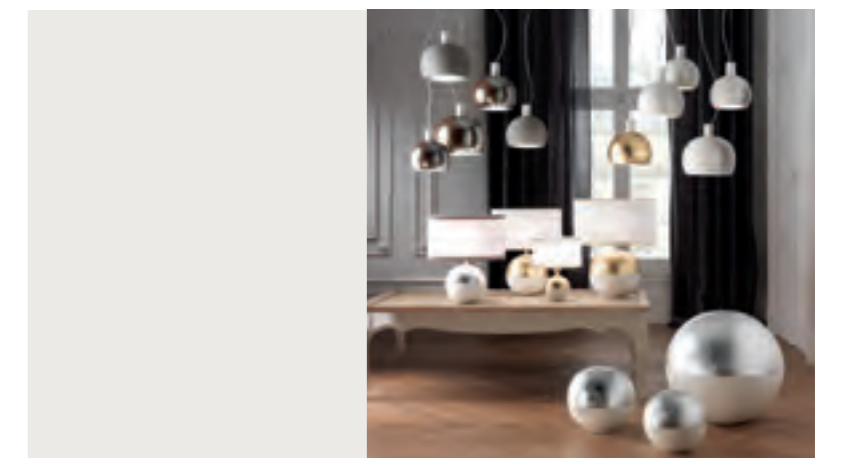
pag. 252-253



pag. 269



pag. 284



pag. 288-289



PHOTO  
Photo-Design

GRAPHIC PROJECT  
Aedo Design

PRINT  
Grafiche Antiga  
2016

FLAI

FLAI SRL  
via martiri della libertà 18  
35016 piazzola sul brenta  
padova italy  
tel +39 049 5590866  
fax +39 049 5590145

[info@flaiweb.com](mailto:info@flaiweb.com)  
[www.flaiclassic.it](http://www.flaiclassic.it)